

CCTPC ANNEXE 1 :

Déscriptif matériels lot 1

MAITRE D'OUVRAGE

Centre Régional des Oeuvres Universitaires et Scolaires
Lorraine (CROUS)

-oOo-

MARCHÉ PUBLIC D'EXPLOITATION DES
INSTALLATIONS DE GENIE CLIMATIQUE

-oOo-



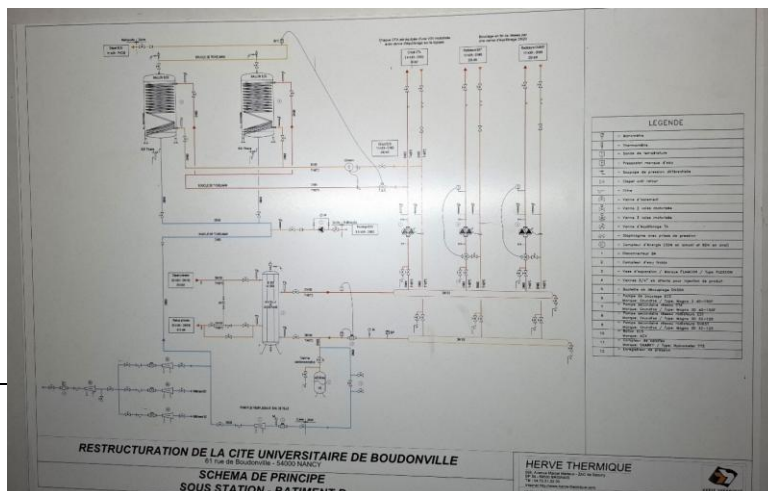
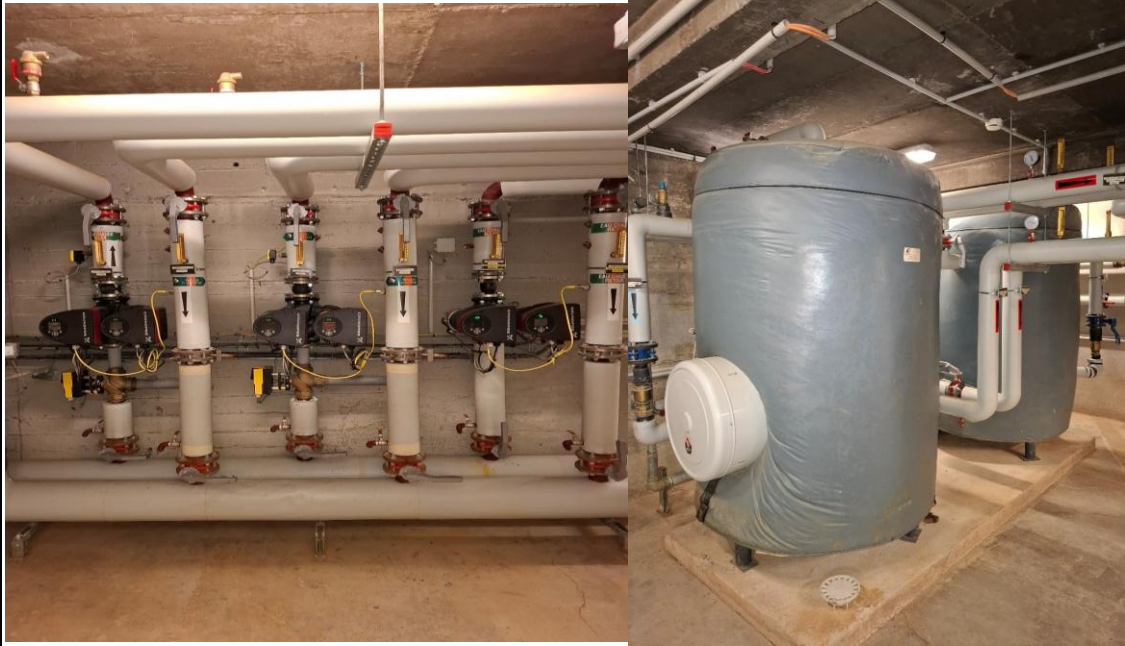
| Annexe n°1 - LISTE DES SITES | | | | | | | PHOTOS 360° | | | | | | |
|------------------------------|--------------------------|--|--|------------|------------------|---------------|--|--|--|--|--|--|--|
| N° | SITE | Adresse | ENERGIE PRIMAIRE | NB de bits | Surfaces totales | Nb de chambre | | | | | | | |
| 1 | CU BOUDONVILLE | 61 rue de Boudonville 54000 Nancy | GAZ | 2 | 11968 | 655 | https://gema.bet-huguet.com/banque-images-publique/98f50793-e833-4e8d-87e1-f2f87504e57d https://gema.bet-huguet.com/banque-images-publique/929ba056-599c-4b63-aa54-b24a06835b4b https://gema.bet-huguet.com/banque-images-publique/bcb8a1a3-c57a-4994-b847-8a19a7b763a https://gema.bet-huguet.com/banque-images-publique/00396ae1-846c-424b-aafa-8c6db3554ca2 https://gema.bet-huguet.com/banque-images-publique/d687ca71-1f1b-4768-8b69-8e87e6d81782 https://gema.bet-huguet.com/banque-images-publique/3b621d74-c5a0-4ccc-b53d-3ded29c96afc https://gema.bet-huguet.com/banque-images-publique/2b9ae9d8-735f-4629-9926-7ef1f5493ae https://gema.bet-huguet.com/banque-images-publique/0599fe2a-07de-4f46-a4e0-9a69748c4d0d https://gema.bet-huguet.com/banque-images-publique/400184ab-126f-4c2f-9e76-e41104609494 https://gema.bet-huguet.com/banque-images-publique/dd84e781-4a8e-4621-9b5b-8310072b2812 https://gema.bet-huguet.com/banque-images-publique/3b63f93b-be21-438e-a6f7-13214394b4f7 https://gema.bet-huguet.com/banque-images-publique/18831a9-8fa0-4cd1-8de5-c057d6f22676 https://gema.bet-huguet.com/banque-images-publique/6a396ffa-8842-48bc-9515-19a7ccf794f7 https://gema.bet-huguet.com/banque-images-publique/3b68d6c4-30c5-4c56-8eaf-1b8977a3097a | | | | | | |
| 2 | CU MONBOIS ANCIENNE CITE | 2 rue Ludovic Beuchet 54000 Nancy | GAZ | 1 | 8283 | 350 | https://gema.bet-huguet.com/banque-images-publique/f60bf7e9-b755-4cc6-baa7-5436ab2357b9 | | | | | | |
| 3 | CU MONBOIS LIBERATION | 138 avenue de la Libération 54000 Nancy | GAZ | 2 | 5476 | 280 | https://gema.bet-huguet.com/banque-images-publique/d87c3601-42ea-4e01-8ec4-251be925d2a9 https://gema.bet-huguet.com/banque-images-publique/ba6994d3-7ed0-4b86-a474-a682217fca3c https://gema.bet-huguet.com/banque-images-publique/21825ae7-0f2c-448d-b29f-148d4b2c584 https://gema.bet-huguet.com/banque-images-publique/13171f0a-2d73-413c-a423-9e6785441710 https://gema.bet-huguet.com/banque-images-publique/23e9a975-4c6a-41bb-bb2c-2affe89d9795 https://gema.bet-huguet.com/banque-images-publique/c9ca48ca-9305-4d53-aa03-642d9ba7b360 https://gema.bet-huguet.com/banque-images-publique/26fac7a2-91e0-4bd4-a449-2bb9963f7291 https://gema.bet-huguet.com/banque-images-publique/4bfa6507-d1f4-4d32-ba27-555fe46f5881 https://gema.bet-huguet.com/banque-images-publique/bd50c072-1c36-4c53-a73e-fad7a2d21e3 | | | | | | |
| 4 | CU BATELIERE | 7/15 Avenue de Metz 54320 Maxéville | GAZ | 1 | 7539 | 253 | https://gema.bet-huguet.com/banque-images-publique/73c90cf5-56e0-4d53-9bb8-cc0f1a2e5e1e | | | | | | |
| 5 | CU PROVENÇAL | 3 rue mademoiselle 54000 NANCY | GAZ | 2 | 9153 | 480 | https://gema.bet-huguet.com/banque-images-publique/4a50469d-8a5a-4f21-8e13-77f2bfcc561e https://gema.bet-huguet.com/banque-images-publique/19e0147c-4489-4745-bc38-b32f151b87a2 https://gema.bet-huguet.com/banque-images-publique/da145194-4696-4f29-83bc-520c40df7980 | | | | | | |
| 6 | CU NOTRE DAME DE LOURDES | 3 rue Notre Dame de Lourdes 54000 Nancy | GAZ | 1 | 5005 | 181 | https://gema.bet-huguet.com/banque-images-publique/00c810db-43ca-4202-bd89-6b52cd1734c59 | | | | | | |
| 7 | RU COURS LEOPOLD | 16 Cours Léopold 54000 Nancy | GAZ | 1 | 2873 | | https://gema.bet-huguet.com/banque-images-publique/bd892271-50ca-4375-bf54-6c86d54c3e6c | | | | | | |
| 8 | RU MONBOIS | 131 rue de Boudonville 54000 Nancy | GAZ | 1 | 3013 | | | | | | | | |
| 9 | CU SAURUPT | 26 rue de Saurupt 54000 Nancy | GAZ/RCU 09/2025 | 4 | 21835 | 480 | https://gema.bet-huguet.com/banque-images-publique/e7dee25d-2ccb-46d7-9dad-5b24ba5f3853 https://gema.bet-huguet.com/banque-images-publique/325d4b17-fc36-4b2b-b80a-f8a859301856 | | | | | | |
| 10 | CU PLACIEUX | 39 boulevard Mal Layutey 54600 Villers les NANCY | RCU | 1 | 14097 | 412 | https://gema.bet-huguet.com/banque-images-publique/50e8b45f-ad77-4b6a-9aae-e0322ae63e17 https://gema.bet-huguet.com/banque-images-publique/650e686f-b433-493d-8a57-0757f8d210c5 https://gema.bet-huguet.com/banque-images-publique/8c153a0a-2095-419a-8dd4-171d5359d40a https://gema.bet-huguet.com/banque-images-publique/1807e47d-d76a-4f32-aa18-3e2401cb3d88 https://gema.bet-huguet.com/banque-images-publique/23467d05-ec08-400d-a645-bd7daafad80c https://gema.bet-huguet.com/banque-images-publique/44ff295f-9ec6-4550-af00-cdfc8f82fe39 | | | | | | |
| 11 | RU BRABOIS | 9 avenue de la Forêt de Haye 54500 Vandoeuvre | RCU (ECS gaz) | 1 | 4158 | | https://gema.bet-huguet.com/banque-images-publique/ca5e870c-4fe6-4f87-bc19-71e0c049d1c | | | | | | |
| 12 | RU MEDREVILLE | 73 rue de Laxou 54000 Nancy | RCU | 1 | 1801 | | https://gema.bet-huguet.com/banque-images-publique/c59132ce-046f-4ef1-955a-9929b1cb517b https://gema.bet-huguet.com/banque-images-publique/851934c3-f336-4bb0-b74e-219082c4c390 https://gema.bet-huguet.com/banque-images-publique/495aac8c-08b7-487f-922b-65e3af0539fe | | | | | | |
| 13 | RU STANISLAS MEURTHE | 17 boulevard d'Austrasie 54000 Nancy | RCU | 1 | 1829 | | https://gema.bet-huguet.com/banque-images-publique/690f62c1-2e48-4468-a72d-0a3d7c3b5912 | | | | | | |
| 14 | CU CHARMOIS | Allée du Charmois 54500 Vandoeuvre | RCU | 3 | 8140 | 427 | https://gema.bet-huguet.com/banque-images-publique/e58b023f-5453-418c-8e98-af88fa56b8e0 | | | | | | |
| 15 | FOYER AGI | 11 avenue du Charmois 54500 Vandoeuvre | RCU | 1 | 2150 | 25 | | | | | | | |
| 16 | CU HAUTE-MALGRANGE | 8 rue Jean Lamour 54500 Vandoeuvre | RCU | 3 | 4217 | 222 | | | | | | | |
| 17 | CU MEDREVILLE | 28 rue Aristide Briand 54520 Laxou | RCU | 1 | 8428 | 490 | | | | | | | |
| 18 | CU MONPLAISIR | 5 rue Jacques CALLOT 54000 NANCY | RCU | 5 | 10029 | 518 | | | | | | | |
| 19 | CU VELODROME | Rond-point du VéloDrome 54500 Vandoeuvre | RCU | 3 | 9368 | 340 | | | | | | | |
| 20 | RU ARTHÉM + MDE | Rue Michel Dinet 54000 Nancy | RCU | 1 | 1812 | | | | | | | | |
| 21 | RU SAURUPT | 26 rue de Saurupt 54000 Nancy | SST VENANT DU CU SAURUPT | 1 | 1923 | | | | | | | | |
| 22 | RU VANDOEUVRE | 1 boulevard des Aiguillettes 54500 Vandoeuvre | SST VENANT DU SITE CHARMOIS | 1 | 5206 | | | | | | | | |
| 23 | RU LA LOUVIERE EPINAL | 9 rue de la Louvière 88000 Epinal | SST venant d'un autre bâtiment communal | 1 | 520 | | | | | | | | |
| 24 | RU POLE FIBRE EPINAL | 27 rue du Merle Blanc 88000 Epinal | SST venant d'un autre bâtiment universitaire | 1 | 374 | | | | | | | | |

CHAUFFERIE PRINCIPALE



| | | | | | | | | | |
|--|-----------------------|---|--------------|--|--------------|------------------------|--------------|----------------|--|
| 1 | CU BOUDONVILLE | | | | | | GAZ | | |
| CHAUFFERIE PRINCIPALE | | | | | | | | | |
| | | marque | type | Puis. | Année | AVIS QUALITATIF | | | |
| | | | | | | Bon | Moyen | Mauvais | |
| ASPECT GENERAL | | Peinture, propreté | | | | X | | | |
| | | | | | | | | | |
| PRODUCTION | 1 | Chaudière 1 | VISSMANN | VITOCROSSAL 200 CMZ 620 | 575 KW | 2012 | X | | |
| | 1 | Chaudière 2 | VISSMANN | VITOCROSSAL 200 CTZ 620 | 575 KW | 2012 | X | | |
| | 1 | Chaudière 3 | VISSMANN | VITOCROSSAL 200 CTZ 620 | 575 KW | 2012 | X | | |
| | 1 | Brûleur 1 | VM IV-3 | | | 2012 | X | | |
| | 1 | Brûleur 2 | VM IV-3 | | | 2012 | X | | |
| | 1 | Brûleur 3 | VM IV-3 | | | 2012 | X | | |
| | 3 | V2V Cascade | SIEMENS | SQL 35 + VKF 46,100 | | | X | | |
| | 1 | Régulateur cascade | VIESMANN | VITOTRONIC 300 | | | X | | |
| 1 | Expansion | FLAMCO | + Module GMP | 800L | 2012 | X | | | |
| | | | | | | | | | |
| CIRCUIT 1 OUEST | 1 | Pompe double | GRUNDFOS | MAGNA 1 D65-120F | | | X | | |
| | 1 | Régulateur | SAUTER | SYNCO RMH 760 + RMZ 789 + 787 | | | X | | |
| | 1 | V3V | SIEMENS | SAX31DN 40 VXF 31.40-16 | | | X | | |
| | | | | | | | | | |
| CIRCUIT 2 CTA | 1 | Pompe double | GRUNDFOS | MAGNA 1 D 40-120 F | | | X | | |
| | | | | | | | | | |
| | | | | | | | | | |
| CIRCUIT 3 PRIMAIRE SOUS-STATION | 1 | Pompe double | GRUNDFOS | UPS D80-120F | | | X | | |
| | | | | | | | | | |
| | | | | | | | | | |
| CIRCUIT 4 EST | 1 | Pompe double | GRUNDFOS | UPSD 65-120F | | | X | | |
| | 1 | V3V | SIEMENS | VXF 31.40-16+SAX31 | | | X | | |
| | | | | | | | | | |
| DIVERS | 1 | ADOUCCISEUR | BWT | | | | X | | |
| | 1 | POT A BOUE | ATLANTIC | MAGNET 28 P 01 + pompe WILO YONOS 50/0,5 | | | X | | |
| | 1 | POMPE DE RELEVAGE | SALMSON | | | | X | | |
| | | | | | | | | | |
| VENTILATION | 2 | CTA | | | | | | | |
| | 7 | VMC | ALDES | | | | | | |
| | | | | | | | | | |
| CIRCUIT ECS | 1 | Echangeur | CHAROT | PACK CONTROL 2 | 706435 | | X | | |
| | 1 | Pompe double échang. | WILO | YONOS MAXO D40-0.5/12 | | | X | | |
| | 2 | Ballon | CHAROT | 2000L | | | X | | |
| | 1 | Pompe double ballon | GRUNDFOS | | | | X | | |
| | 1 | Pompe bouclage ECS | GRUNDFOS | UP 20-45N | | | X | | |
| | 1 | Régulation | CHAROT | | | | X | | |
| | 1 | V3V | CHAROT | DN32 | | | X | | |
| <div style="display: flex; justify-content: space-around;"> Oui Non </div> | | | | | | | | | |
| ARMOIRE ELECTRIQUE | | Nombre : 1 | | | | | | | |
| | | | | | | | | | |
| TELESURVEILLANCE | | X | | | | | | | |
| | | | | | | | | | |
| COMPTEUR ECS | | DONT APPOINT + ADOU | | x3 | | | | | |
| | | | | | | | | | |
| DISCONNECTEUR | | SOCLA BA 2860 DN25 | | <input checked="" type="checkbox"/> COMPTEUR | | | | | |
| | | | | | | | | | |
| | | | | | | | | | |
| REMARQUES | | 655 RADIATEURS SUR ENSEMBLE DU SITE 1310 BOUCHES DE VMC SUR ENSEMBLE DU SITE | | | | | | | |

SST BATIMENT B



| | | |
|---|----------------|-----|
| 1 | CU BOUDONVILLE | GAZ |
|---|----------------|-----|

SST BATIMENT B

| marque | type | Puis. | Année | AVIS QUALITATIF | | |
|--------|------|-------|-------|-----------------|-------|---------|
| | | | | Bon | Moyen | Mauvais |

| | | | | |
|----------------|--------------------|---|--|--|
| ASPECT GENERAL | Peinture, propreté | X | | |
|----------------|--------------------|---|--|--|

| | | | | | | | |
|--------------------|---|--------------|---------|----------------------|---|--|--|
| CIRCUIT 1 OUEST | 1 | Pompe double | GUNDFOS | MAGNA 3D 50-180F 280 | x | | |
| | | | | | | | |
| | 1 | V3V | SAUTER | AVM 1000 + BUN 050 | x | | |
| | 1 | Régulateur | | | | | |

| | | | | | | | |
|------------------|---|--------------|---------|----------------------|---|--|--|
| CIRCUIT 2 EST | 1 | Pompe double | GUNDFOS | MAGNA 3D 50-180F 280 | x | | |
| | | | | | | | |
| | 1 | V3V | SAUTER | AVM 1000 + BUN 050 | x | | |
| | 1 | Régulateur | | | | | |

| | | | | | | | |
|--------|---|-------------------|------------------|-------------------|---|--|--|
| DIVERS | 1 | VASE EXPANSION | REFLEX | 500L | X | | |
| | 1 | REGULATION | SIEMENS + SAUTER | SYNCO+ / EQJW 125 | X | | |
| | | | | | | | |
| | 1 | POMPE DE RELEVAGE | SALMSON | | X | | |

| | | | | | | | |
|--------------|---|-----|-------|--|--|--|--|
| VENTILLATION | 5 | CTA | | | | | |
| | 5 | VMC | ALDES | | | | |
| | | | | | | | |
| | | | | | | | |

| | | | | | | | |
|-------------|---|---------------------|----------|----------------------|---|--|--|
| CIRCUIT ECS | | | | | | | |
| | 2 | Ballon | ACV | 2000L | x | | |
| | 2 | Pompe charge ballon | GRUNDFOS | MAGNA 3D 40-150F 280 | x | | |
| | 1 | Pompe bouclage ECS | GRUNDFOS | MAGNA 3 40-150F N | x | | |

Oui Non

| | | | | | | |
|--------------------|--------------------------|-------|--------------------------|--|--|--|
| ARMOIRE ELECTRIQUE | <input type="checkbox"/> | Nombr | <input type="checkbox"/> | | | |
|--------------------|--------------------------|-------|--------------------------|--|--|--|

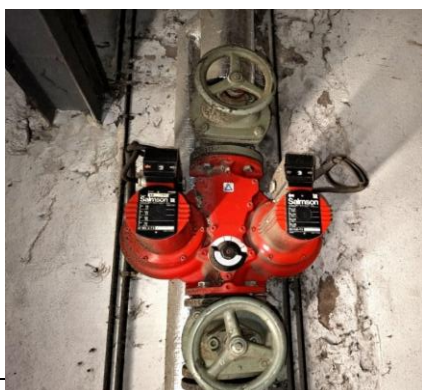
| | | | | | |
|------------------|--------------------------|--------------------------|--|--|--|
| TELESURVEILLANCE | <input type="checkbox"/> | <input type="checkbox"/> | | | |
|------------------|--------------------------|--------------------------|--|--|--|

| | | | | | |
|--------------|--------------------------|--------------------------|--|--|--|
| COMPTEUR ECS | <input type="checkbox"/> | <input type="checkbox"/> | | | |
|--------------|--------------------------|--------------------------|--|--|--|

| | | | | | |
|---------------|-----------------|----------|--|--|--|
| DISCONNECTEUR | OUI CONTROLABLE | COMPTEUR | | | |
|---------------|-----------------|----------|--|--|--|

| | |
|-----------|--|
| REMARQUES | |
|-----------|--|

CHAUFFERIE N°1

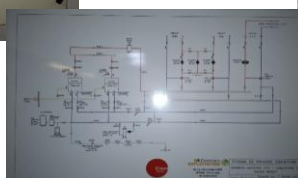


CHAUFFERIE N°2



| | | | | | | | | | |
|--------------------|------------|--------------------|----------------------------|------------|----------------------------------|-----------------|-------|---------|---|
| 2 | CU MONBOIS | | | | | | GAZ | | |
| CHAUFFERIE n°2 | | | | | | | | | |
| | | marque | type | Puis. | Année | AVIS QUALITATIF | | | |
| | | | | | | Bon | Moyen | Mauvais | |
| ASPECT GENERAL | | Peinture, propreté | | | | | | | |
| PRODUCTION | | 1 | Chaudière 1 | DEDIETRICH | CF 350/9 | 156 | 1982 | | x |
| | | 1 | Chaudière 2 | | | | | | |
| | | 1 | Chaudière 3 | | | | | | |
| | | 1 | Brûleur 1 | CUENOD | C22G 257/8 | 240 | | | x |
| | | 1 | Brûleur 2 | | | | | | |
| | | 1 | Brûleur 3 | | | | | | |
| | | 1 | Pompe recycl. 1 | GRUNDFOS | UPS 25-60 180 | | | | x |
| | | 1 | Pompe recycl. 2 | | | | | | |
| | | 1 | Pompe recycl. 3 | | | | | | |
| | | 3 | V2V Cascade | | | | | x | |
| | | 1 | Régulateur cascade | SIEMENS | 2 RMH 760B + RMZ 789 + RMZ 782 B | | | | |
| | | 1 | Expansion | CODITHERM | 200 L | | | | x |
| CIRCUIT 1 | | 1 | Pompe double | GRUNDFOS | UPS D40-60F | | | | x |
| SPECTACLE | | | | | | | | | |
| | | 1 | V3V | SIEMENS | SKD 32 + VXG41.15 | | | | x |
| | | | | | | | | x | |
| CIRCUIT 2 | | 1 | Pompe double | WILO | YONOS MAXO D40/0,5-8 | | | | x |
| CHAMBRE | | | | | | | | | |
| | | 1 | V3V | SAUTER | MH32+ASM115F120 | | | | x |
| | | | | | | | | x | |
| CIRCUIT 3 | | 1 | Pompe double | SALMSON | EURAMO C2400T | | | | x |
| ATELIER | | | | | | | | | |
| | | | | SAUTER | AKM115F120 + Vanne 3/4" | | | | x |
| | | | | | | | | x | |
| CIRCUIT 4 | | 1 | Pompe double | SALMSON | CXL 2070 | | | | x |
| APPART n°2 | | | | | | | | | |
| | | 1 | V3V | SAUTER | ASM 115F120 + MH 32F25 | | | | x |
| | | | | | | | | x | |
| CIRCUIT 5 | | 1 | Pompe double | WILO | YONOS MAXO D30/0,5-7 | | | | x |
| APPART n°1 | | | | | | | | | |
| | | 1 | V3V | SAUTER | AR30W13 + MH32R20 | | | | x |
| | | 1 | Régulateur | RVL 45 | | | | x | |
| CIRCUIT ECS | | | | | | | | | |
| | | | | | | | | | |
| | | 1 | Vase d'expansion | SANITAIRE | 8L | | | | |
| | | 1 | Ballon | VISSMANN | VERTICELL 500L | 500L | 1985 | | |
| | | 1 | Pompe double charge ballon | GRUNDFOS | MAGNA 1D 40-60F | | | | |
| | | 2 | Pompe bouclage ECS | SALMSON | NEC33T+NEC 2T25 | | | | |
| | | | Régulation | | | | | | |
| | | 1 | V3V | LANDIS | SKD32 + VXG 41.32-01 | | | | |
| | | Oui Non | | | | | | | |
| ARMOIRE ELECTRIQUE | | Nombre : | | | | | | | |
| TELESURVEILLANCE | | | | | | | | | |
| COMPTEUR ECS | | OUI | | | | | | | |
| DISCONNECTEUR | | NON | | COMPTEUR | | OUI | | | |
| | | | | | | | | | |
| REMARQUES | | | | | | | | | |

CHAUFFERIE N°3



| | | | | | | | | | |
|---------------------------|-------------------|--------------------|----------------------------|--------------|-------------------------------|------------------------|--------------|----------------|---|
| 2 | CU MONBOIS | | | | | | | GAZ | |
| CHAUFFERIE n°3 | | | | | | | | | |
| | | marque | type | Puis. | Année | AVIS QUALITATIF | | | |
| | | | | | | Bon | Moyen | Mauvais | |
| ASPECT GENERAL | | Peinture, propreté | | | | | | | |
| PRODUCTION | | 1 | Chaudière 1 | ATLANTIC | VARMAX B2 | 225 kw | 2022 | X | |
| | | 1 | Chaudière 2 | ATLANTIC | VARMAX B2 | 225 kw | 2022 | X | |
| | | 2 | V2V Cascade | | | | | | |
| | | 1 | Pot à boue magnétique | ATLANTIC | MAGNET EVO 04PC | | | X | |
| | | 1 | Pompe | GRUNDFOS | UPM3 | | | | |
| | | | | | | | | X | |
| | | | | | | | | X | |
| | | 1 | STATION TRANSFO | PNEUMATEX | TV6.Z | | | X | |
| | | 1 | Expansion | PNEUMATEX | CU400-2 + STATICO SD80.10 | | | | |
| | | | | | | | | | |
| | | | | | | | | | |
| CIRCUIT 1 | | 1 | Pompe SIMPLE | SALMSON | SIRIUX 65-80 | | | | x |
| SUD | | | | | | | | | |
| | | 1 | V3V | LANDIS | SQD3 + B3F65 | | | x | |
| | | 1 | Régulateur | SAUTER | EQJW120 | | | x | |
| CIRCUIT 2 | | 1 | Pompe SIMPLE | SALMSON | SIRIUX 65-80 | | | | x |
| NORD | | | | | | | | | |
| | | 1 | V3V | LANDIS | SQD3 + B3F65 | | | x | |
| | | 1 | Régulateur | SAUTER | EQJW120 | | | x | |
| CIRCUIT 3 | | 1 | Pompe SIMPLE SECOURS | SALMSON | SIRIUX 65-80 | | | | x |
| SECOURS | | | | | | | | | |
| | | | | | | | | | |
| | | | | | | | | | |
| | | | | | | | | | |
| | | | | | | | | | |
| | | | | | | | | | |
| | | | | | | | | | |
| | | | | | | | | | |
| CIRCUIT ECS | | | | | | | | | |
| | | | | | | | | | |
| | | | | | | | | | |
| | | 1 | Ballon | VISSMANN | VERTICELL 3 x 500 L superposé | 1500 | | | X |
| | | 1 | Pompe charge double ballon | SALMSON | C2500N | | | x | |
| | | 1 | Pompe bouclage ECS | GRUNDFOS | ALPHA 2L 25-60 180 | | x | | |
| | | | Régulation | SIEMENS | RCE 61.11 | | | | |
| | | | V3V | SIEMENS | SQ65 + VVG DN 40 | | | x | |
| | | Oui Non | | | | | | | |
| ARMOIRE ELECTRIQUE | | Nombre : | | | | | | | |
| TELESURVEILLANCE | | | | | | | | | |
| COMPTEUR ECS | | OUI | | | | | | | |
| DISCONNECTEUR | | OUI CALEFFI DN 20 | | COMPTEUR | | OUI | | | |
| REMARQUES | | | | | | | | | |

CHAUFFERIE PRINCIPALE



| | | |
|---|-----------------------|-----|
| 3 | CU MONBOIS LIBERATION | GAZ |
|---|-----------------------|-----|

CHAUFFERIE PRINCIPALE

| marque | type | Puis. | Année | QUALITATIF |
|--------|------|-------|-------|-------------------|
| | | | | Bon Moyen Mauvais |

| | | | | |
|----------------|--------------------|--|--|--|
| ASPECT GENERAL | Peinture, propreté | | | |
|----------------|--------------------|--|--|--|

| | | | | | | | | | |
|------------------|---|-----------------------------|-------------|------------------------|-------------|------|---|--|--|
| PRODUCTION | 1 | Chaudière 1 | DE DIETRICH | GT 430-10 | 430 kW | 2017 | x | | |
| appart. fonction | 1 | Chaudière 2 | ATLANTIC | VARMAX B4 | 390 kW | 2022 | x | | |
| | 1 | Chaudière murale | Chaffoteaux | Mira C Green | | | x | | |
| | 1 | Brûleur 1 | DE DIETRICH | G43-15 | 590 | | x | | |
| | | | | | | | | | |
| | 1 | Neutraliseur à condensation | SOLUTECH | | | | | | |
| | 1 | Pompe recycl. 1 | SALMSON | SIRIUX 65-80 | | 2017 | x | | |
| | | | | | | | | | |
| | 2 | Pot à boue magnétique | GREENLIFE | MATNT | | | | | |
| | 2 | Pompes | WILO | PARA30/8.75 | | | | | |
| | | | | | | | | | |
| | 1 | Régulateur | SAUTER | modu 680AS + 5 modules | | | | | |
| | 2 | Expansion | VAREM | | 500L + 150L | | | | |

| | | | | | | | | | |
|--------------------|---|---------------|--------|--------------------------|--------|--|---|--|--|
| CIRCUIT 1 | 1 | Pompe double | LOWARA | ECOCIRC XLD 32-80F | | | x | | |
| OUEST | | | | | | | | | |
| | 1 | V3V motorisée | SAUTER | BUN025F300 + AVM105SF132 | SAUTER | | x | | |
| CIRCUIT 2 | 1 | Pompe double | LOWARA | ECOCIRC XLD 32-80F | | | x | | |
| EST | | | | | | | | | |
| | 1 | V3V motorisée | SAUTER | BUN025F300 + AVM105SF132 | | | x | | |
| | | | | | | | | | |
| CIRCUIT 3 | 1 | Pompe double | LOWARA | ECOCIRC XLD 40-80F | | | x | | |
| SOUS-STATION BAT A | | | | | | | | | |
| | | | | | | | | | |
| | | | | | | | | | |

| | | | | | | | | | |
|-------------|---|----------------------|-----------|--------------------------|--|--|--|--|--|
| CIRCUIT ECS | 2 | Echangeur | ATLANTIC | RU128D | | | | | |
| | 4 | Pompe charge échang. | WILO | STRATOS PARA 30/1-12 | | | | | |
| | 2 | Ballons primaires | THERMADOR | 2000l | | | | | |
| | 1 | Pompe charge ballon | LOWARA | ECOCIRC XLD 40-80 | | | | | |
| | 2 | Pompe bouclage ECS | LOWARA | ECOCIRC XL N 32-100 | | | | | |
| | 2 | Régulation | ATLANTIC | NAVISTEM W3000 | | | | | |
| | 2 | V3V | SIEMNES | VXD459-32-16 + SAS 61,03 | | | | | |

Oui Non

| | | | | |
|--------------------|----------|--|--|--|
| ARMOIRE ELECTRIQUE | Nombre : | | | |
|--------------------|----------|--|--|--|

| | |
|------------------|--|
| TELESURVEILLANCE | |
|------------------|--|

| | | |
|--------------|----|-------------------------------|
| COMPTEUR ECS | x2 | COMPTEUR ENERGIES SHARKY DN32 |
|--------------|----|-------------------------------|

| | | | |
|---------------|----|--------------|----------------------|
| DISCONNECTEUR | x1 | CALEFFI DN20 | COMPTEUR x2 APPOINTS |
|---------------|----|--------------|----------------------|

| | |
|-----------|---|
| REMARQUES | 1 ADOUCISSEUR SUR APPOINT POLAR |
| | 280 RADIATEURS SUR ENSEMBLE DU SITE |
| | 560 BOUCHES DE VMC SUR ENSEMBLE DU SITE |

SST BATIMENT A



| | | | | | | | |
|--------------------------------|------------------------------|--------------------|-------------|--------------|--------------|------------------------|--------------|
| 3 | CU MONBOIS LIBERATION | | | | GAZ | | |
| SOUS-STATION BATIMENT A | | | | | | | |
| | | marque | type | Puis. | Année | AVIS QUALITATIF | |
| | | | | | | Bon | Moyen |
| ASPECT GENERAL | | Peinture, propreté | | | | | |

| | | | | | | |
|-------------------|---|------------|--------|------------------|--|--|
| PRODUCTION | | | | | | |
| | 1 | Régulateur | SAUTER | MODU 525 + écran | | |
| | | | | | | |
| | | | | | | |
| | | | | | | |
| | | | | | | |
| | | | | | | |
| | | | | | | |
| | | | | | | |

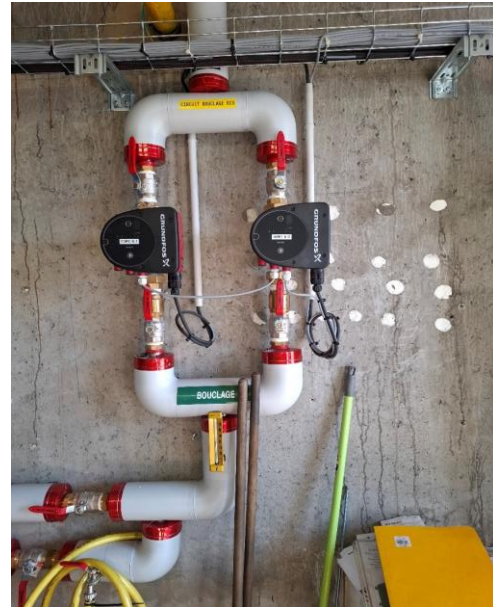
| | | | | | | |
|--------------------|---|---------------|--------|--------------------------|---|--|
| CIRCUIT 1 | | | | | | |
| RAD EST | 1 | Pompe double | LOWARA | ECOCIRC XLD 32-80F | x | |
| | | | | | | |
| | 1 | V3V motorisée | SAUTER | BUN032F300 + AVM115SF132 | x | |
| CIRCUIT 2 | | | | | | |
| RAD OUEST | 1 | Pompe double | LOWARA | ECOCIRC XLD 32-80F | x | |
| | | | | | | |
| | 1 | V3V motorisée | SAUTER | BUN032F300 + AVM115SF132 | x | |
| | | | | | | |
| | | | | | x | |
| | | | | | | |
| CIRCUIT CTA | | | | | | |
| | 1 | Pompe double | LOWARA | ECOCIRC XLD 32-80F | x | |
| | | | | | | |
| | 1 | V3V | BELIMO | 3/4" + HT24-SR-T | x | |
| | | | | | | |
| | | | | | | |
| | | | | | | |

| | | | | | | |
|--------------------|---|-----|------------|----------------------|---|--|
| VENTILATION | | | | | | |
| | 1 | CTA | France AIR | POWERPLAY T3200-V-EC | X | |
| | | | | | | |
| | | | | | | |
| | | | | | | |
| | | | | | | |

Oui
Non

| | | | | |
|---------------------------|----------|--|--|--|
| ARMOIRE ELECTRIQUE | Nombre : | | | |
| TELESURVEILLANCE | | | | |
| COMPTEUR ECS | | | | |
| DISCONNECTEUR | | | | |
| | | | | |
| REMARQUES | | | | |
| | | | | |

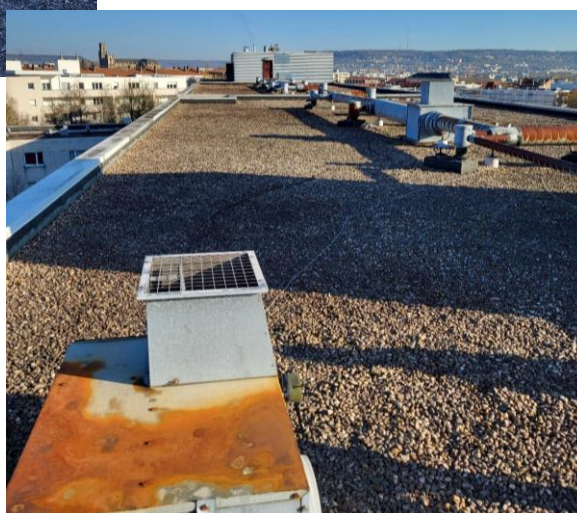
CHAUFFERIE PRINCIPALE



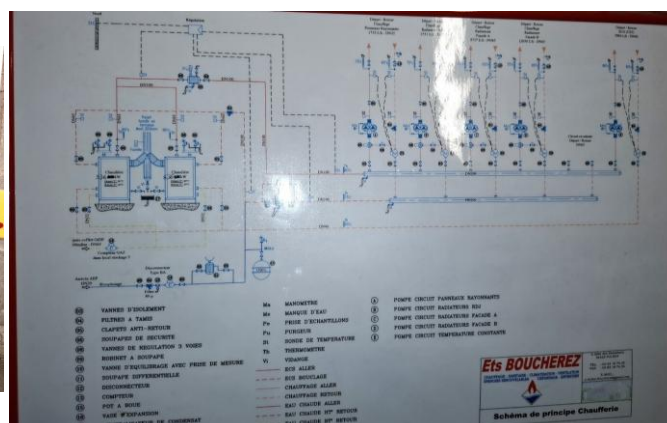
CHAUFFERIE PRINCIPALE



| | | | | | | | | | |
|--------------------------|--------------|--|-------------------------------|-------------|--------------------------|-----------------|-------|---------|---|
| 5 | CU PROVENCAL | | | | | | GAZ | | |
| CHAUFFERIE PRINCIPALE | | | | | | | | | |
| | | marque | type | Puis. | Année | AVIS QUALITATIF | | | |
| | | | | | | Bon | Moyen | Mauvais | |
| ASPECT GENERAL | | Peinture, propreté | | | | X | | | |
| PRODUCTION | | 1 | Chaudière 1 | GUILLOT | VARMAX 450 | 439 | 2021 | x | |
| | | 1 | Chaudière 2 | GUILLOT | VARMAX 450 | 439 | 2021 | x | |
| | | 2 | V2V Cascade | SAUTER | DN80 + ADM322HF120 | | | | |
| | | 2 | Bac neutralisation condensats | | | | | x | |
| | | 1 | Régulateur cascade + Circuits | ATLANTIC | Intégré chaudière | | | | |
| | | 1 | Expansion | PNEUMATEX | EGC + Automat PAC | 600L | 1991 | | x |
| CIRCUIT 1 | | 1 | Pompe double | GRUNFOS | MAGNA 1D 40-100F | | | | x |
| BATIMENT A EST | | 1 | V3V | SAUTER | AVM115F120 + BUN032F300 | | | | x |
| | | | | | SAUTER | | | | x |
| CIRCUIT 2 | | 1 | Pompe double | GRUNDFOS | MAGNA 1D 50-80F | | | | x |
| BATIMENT A OUEST | | 1 | V3V | SAUTER | AVM115F120 + BUN032F300 | | | | x |
| | | | | | | | | | x |
| CIRCUIT 3 | | 1 | Pompe double | GRUNDFOS | MAGNA 1D 40-100F | | | | x |
| BATIMENT C + D | | 1 | V3V | SAUTER | AVM115F120 + BUN032F300 | | | | x |
| | | 1 | Régulateur | | | | | | x |
| CIRCUIT 4 | | 1 | Pompe double | WILO | YONOS MAXO D65/0.5-16 | | | | x |
| CONSTANT | | | | | | | | | |
| | | | | | | | | | |
| Autres Equipements | | 1 | Désemboueur | ATLANTIC | MAGNET EVO 8 PC | | | | |
| | | 1 | Pompe | WILO | STRATOS PARA 30/1-2 | | | | |
| | | 1 | Pompe doseuse filmogène | | | | | | |
| | | 1 | Adoucisseur | BWT | 5018 | | | | |
| VENTILATION | | 6 | VMC | France AIR | HUCE 6050 1 | | | | |
| BAT. A | | 4 | | | JBLH20 | | | | |
| BAT. A | | 3 | VMC | France AIR | HUCE 50 | | | | |
| BAT. B | | | | | | | | | |
| CIRCUIT ECS | | 1 | Echangeur | ATLANTIC | RUS 612 DS | | | | x |
| | | 2 | Pompe charge échang. | WILO | STRATOS PARA 30/1-2 | | | | x |
| | | 2 | Ballon | ATLANTIC | CORHYDRO 750 L | | | | x |
| | | 1 | Pompe charge ballon | GRUNDFOS | UPS 32-80 N | | | | x |
| | | 2 | Pompe bouclage ECS | GRUNDFOS | MG 80N2 | | | | x |
| | | 1 | Régulation | ATLANTIC | NAVISTEM W3020 | | | | x |
| | | 1 | V3V | SIEMENS | SAS 61.03 + VXP159-32-16 | | | | |
| | | Oui Non | | | | | | | |
| ARMOIRE ELECTRIQUE | | 1 | Nombre : | | | | | | |
| GROUPE MAINTIEN PRESSION | | 1 | GRUNDFOS | AQUAS D40/2 | | | | | |
| COMPTEUR ECS | | 1 | OUI | | | | | | |
| DISCONNECTEUR | | 1 | OUI CONTROLABLE | SOCIA DN32 | COMPTEUR : OUI | | | | |
| REMARQUES | | 500 RADIATEURS SUR ENSEMBLE DU SITE 960 BOUCHES DE VMC SUR ENSEMBLE DU SITE | | | | | | | |



| 5 | CU PROVENCAL | | | | | | | | | | GAZ | | | | | | | | | | | | | | | | | | | | | |
|--|--------------|-------------------------------------|--------|----------|-----------------------|------------------------|--|---------------------------|---|---|-----|--------|--|------|--|-------|-------|-----------------|--|--|-----|--|-------|--|---------|--|--|--|--|--|--|--|
| SST BATIMENT A | | | | | | | | | | | | | | | | | | | | | | | | | | | | | | | | |
| <table><tr><td colspan="2">marque</td><td colspan="2">type</td><td colspan="1">Puis.</td><td colspan="1">Année</td><td colspan="3">AVIS QUALITATIF</td></tr><tr><td colspan="2">Bon</td><td colspan="2">Moyen</td><td colspan="3">Mauvais</td><td colspan="5"></td></tr></table> | | | | | | | | | | | | marque | | type | | Puis. | Année | AVIS QUALITATIF | | | Bon | | Moyen | | Mauvais | | | | | | | |
| marque | | type | | Puis. | Année | AVIS QUALITATIF | | | | | | | | | | | | | | | | | | | | | | | | | | |
| Bon | | Moyen | | Mauvais | | | | | | | | | | | | | | | | | | | | | | | | | | | | |
| ASPECT GENERAL | | Peinture, propreté | | | | | | | | | | | | | | | | | | | | | | | | | | | | | | |
| | | | | | | | | | | | | | | | | | | | | | | | | | | | | | | | | |
| CIRCUIT 1 | 1 | POMPE DOUBLE | | SALMSON | | ECX 2650-T3 | | | x | | | | | | | | | | | | | | | | | | | | | | | |
| PLANCHER | | | | | | | | | | | | | | | | | | | | | | | | | | | | | | | | |
| | 1 | V3V | SAUTER | | AVN3H112 F001 + B6R15 | | | x | | | | | | | | | | | | | | | | | | | | | | | | |
| | 1 | REGUL | SAUTER | | RSE | | | | | x | | | | | | | | | | | | | | | | | | | | | | |
| CIRCUIT 2 | 1 | POMPE DOUBLE | | SALMSON | | DCX50-50 | | | x | | | | | | | | | | | | | | | | | | | | | | | |
| CAFETERIA | | | | | | | | | | | | | | | | | | | | | | | | | | | | | | | | |
| | 1 | REGUL (1 seule pour les 2 circuits) | SAUTER | | RSE | | | | | x | | | | | | | | | | | | | | | | | | | | | | |
| | | | | | | | | | | | | | | | | | | | | | | | | | | | | | | | | |
| SST BATIMENT B | | | | | | | | | | | | | | | | | | | | | | | | | | | | | | | | |
| CIRCUIT 1 | 1 | POMPE DOUBLE | | GRUNDFOS | | UPD 32-80 | | | x | | | | | | | | | | | | | | | | | | | | | | | |
| ENE | | | | | | | | | | | | | | | | | | | | | | | | | | | | | | | | |
| | 1 | V3V | SAUTER | | AVM115 F120 | | | x | | | | | | | | | | | | | | | | | | | | | | | | |
| | 1 | REGUL | SAUTER | | EQUITHERM EQJW125 | | | x | | | | | | | | | | | | | | | | | | | | | | | | |
| CIRCUIT 2 | 1 | POMPE DOUBLE | | GRUNDFOS | | UPD 32-80 | | | x | | | | | | | | | | | | | | | | | | | | | | | |
| OSO | | | | | | | | | | | | | | | | | | | | | | | | | | | | | | | | |
| | 1 | V3V | SAUTER | | AVM115 F120 | | | x | | | | | | | | | | | | | | | | | | | | | | | | |
| | 1 | REGUL | SAUTER | | EQUITHERM EQJW125 | | | x | | | | | | | | | | | | | | | | | | | | | | | | |
| | | | | | | | | | | | | | | | | | | | | | | | | | | | | | | | | |
| | | | | | | | | | | | | | | | | | | | | | | | | | | | | | | | | |
| Autres Equipements | 2 | CTA | | CIAT | | UP37-4 MT55 | | En faux plafond cafétéria | | | x | | | | | | | | | | | | | | | | | | | | | |
| | 2 | V3V motorisée | | SAUTER | | | | En faux plafond cafétéria | | | x | | | | | | | | | | | | | | | | | | | | | |
| | 2 | Régulateur | | SAUTER | | ERAS | | | | | x | | | | | | | | | | | | | | | | | | | | | |
| | 1 | Surpresseur 3 Pompes | | LOWARA | | SMB30/2/PMA/FL | | 2023 | x | | | | | | | | | | | | | | | | | | | | | | | |
| | 1 | Régulation Surpresseur | | LOWARA | | Conrl box QESM30/1.015 | | 2023 | x | | | | | | | | | | | | | | | | | | | | | | | |
| | | | | | | | | | | | | | | | | | | | | | | | | | | | | | | | | |



| | | | | | | | | |
|-----------------------|--------------------------|---|-----------------------------|-------------------|-----------------------------|-----------------|-------|---------|
| 6 | CU NOTRE DAME DE LOURDES | | | | | GAZ | | |
| CHAUFFERIE PRINCIPALE | | | | | | | | |
| | | marque | type | Puis. | Année | AVIS QUALITATIF | | |
| | | | | | | Bon | Moyen | Mauvais |
| ASPECT GENERAL | | Peinture, propreté | | | | | | |
| COMPTEUR ENERGIE | | 1 COMPTEUR SUR CHAQUE CIRCUIT | | | | X | | |
| | | | | | | X | | |
| PRODUCTION | | 1 | Chaudière 1 | ATLANTIC GUILLOT | VARMAX 550 | 535 kW | 2016 | X |
| | | 1 | Chaudière 2 | ATLANTIC GUILLOT | VARMAX 550 | 535 kW | 2016 | X |
| | | 2 | V2V Cascade | SAUTER | ADM 322 HF | | | X |
| | | 2 | Régulateur cascade+circuits | SAUTER | FLEXOTRON 800 | | | X |
| | | 2 | Expansion | REFLEX | 500L+1000L | | | X |
| | | 1 | Dégazeur | PNEUMATEX | Prentex | | | |
| | | 1 | Décanteur | PNEUMATEX | ZEPARO Z10 F100 | | | |
| | | | | | | | | |
| | | | | | | | | |
| CIRCUIT 1 | | 1 | Pompe double | GRUNDFOS | MAGNA 3D 50-120F 220 | | | X |
| CONSTANT | | | | | | | | |
| | | | | | | | | |
| | | | | | | | | |
| CIRCUIT 2 | | 1 | Pompe double | GRUNDFOS | TPED32-200 | | | X |
| FACADE COURS | | | | | SAUTER | | | |
| | | 1 | V3V | SAUTER | AVM32 15F 132 + BUN050F200 | | | X |
| | | | | | | | | |
| CIRCUIT 3 | | 1 | Pompe double | GRUNDFOS | TPED 32-200 | | | X |
| FACADE RUE | | | | | | | | |
| | | 1 | V3V | SAUTER | AVM32 15F 132 + BQE065F300 | | | X |
| | | 1 | Régulateur | | | | | |
| CIRCUIT 4 | | 1 | Pompe double | GRUNDFOS | MAGNA 3D 32-40 180 | | | X |
| RDJ | | | | | | | | |
| | | 1 | V3V | SAUTER | AVM 115 SF 132 + BUN025F300 | | | X |
| | | | | | | | | |
| CIRCUIT 5 | | 1 | Pompe double | GRUNDFOS | MAGNA 3D 32-80 180 | | | X |
| PANNEAU RAYO | | | | | | | | |
| | | 1 | V3V | SAUTER | AVM 115 SF 132 + BUN025F300 | | | X |
| | | | | | | | | |
| CIRCUIT ECS | | 1 | Echangeur | ATLANTIC GUILLOT | RUS 206 55 | | | X |
| | | 2 | Pompe charge échang. | WILO | STRATOS PARA 30/1-8 TB | | | X |
| | | 1 | Ballon Secondaire | ATLANTIC GUILLOT | 500L | | | X |
| | | 1 | Pompe charge ballon | GRUNDFOS | UP50-25-S | | | X |
| | | 1 | Pompe bouclage ECS | SALMSON | DSB 33-25B | | | X |
| | | 1 | Régulation | ATLANTIC GUILLOT | NAVISTEM W3000 | | | X |
| | | 1 | V3V | SIEMENS | VXP459-32.16 + SAS61 | | | X |
| | | <div>Oui</div> <div>Non</div> | | | | | | |
| ARMOIRE ELECTRIQUE | | 1 | Nombre : | | | | | |
| TELESURVEILLANCE | | | | | | | | |
| COMPTEUR ECS | | 1 | | | | | | |
| DISCONNECTEUR | | 2 | 1 Chauffage + 1 ECS | SOCLA + HONEYWELL | 2 COMPTEURS | | | |
| REMARQUES | | <p>Dégazeur Prentex +1 zeparo Z10 100F + 2 VMC ALDES INOVEC 6500uW + 12 caissons CTA cuisine Nicotra</p> <p>2ème s/st° ECS 1er étage 1 échangeur à plaques GUILLOT RUS 210 SS + 1 régulation GUILLOT NAVISTERM W3000</p> <p>3 ème étage : 1 Ballon GUILLOT ECS 1000L + 1 Pompe rpamire WILO STRATOS PARA 30/1-8 + 1 V3V motorisée SAS61 SIEMENS + 1 Pompe transfert ballon GRUNDFOS UP50 25-55N + 1 Pompe double bouclage SALMSON DSB 33-25 B</p> <p>197 RADIATEURS SUR ENSEMBLE DU SITE</p> <p>362 BOUCHES DE VMC SUR ENSEMBLE DU SITE</p> | | | | | | |

SOUS STATIONS



| | | | | | | | | | | |
|---|--------------------------|--------------------|----------------------|------------------|----------------------|-------|-------|-----------------|-------|---------|
| 6 | CU NOTRE DAME DE LOURDES | | | | | GAZ | | | | |
| SST 1 ^{er} ETAGE | | | | | | | | | | |
| | | | | marque | type | Puis. | Année | AVIS QUALITATIF | | |
| | | | | | | | | Bon | Moyen | Mauvais |
| ASPECT GENERAL | | Peinture, propreté | | | | | | | | |
| CIRCUIT ECS | | 1 | Echangeur | ATLANTIC GUILLOT | RUS 210 SS | | X | | | |
| | | 2 | Pompe charge échang. | WILO | STRATOS PARA 30/1-8 | | X | | | |
| | | 1 | Ballon Secondaire | ATLANTIC GUILLOT | 1000L | | X | | | |
| | | 1 | Pompe charge ballon | GRUNDFOS | UPS 25-55-N | | X | | | |
| | | 1 | Pompe bouclage ECS | SALMSON | DSB 33-25B | | X | | | |
| | | 1 | Régulation | ATLANTIC GUILLOT | NAVISTEM W3000 | | X | | | |
| | | 1 | V3V | SIEMENS | VXP459-32.16 + SAS61 | | X | | | |
| | | 1 | Compteur ECS | | | | | | | |
| | | 1 | Disconnecteur | SOCLA | BA DN40 | | X | | | |
| SST 3 ^{ème} ETAGE | | | | | | | | | | |
| CIRCUIT ECS | | 1 | Echangeur | ATLANTIC GUILLOT | RUS 210 SS | | X | | | |
| | | 2 | Pompe charge échang. | WILO | STRATOS PARA 30/1-8 | | X | | | |
| | | 1 | Ballon Secondaire | ATLANTIC GUILLOT | 1000L | | X | | | |
| | | 1 | Pompe charge ballon | GRUNDFOS | UPS 25-55-N | | X | | | |
| | | 1 | Pompe bouclage ECS | SALMSON | DSB 33-25B | | X | | | |
| | | 1 | Régulation | ATLANTIC GUILLOT | NAVISTEM W3000 | | X | | | |
| | | 1 | V3V | SIEMENS | VXP459-32.16 + SAS61 | | X | | | |
| | | 1 | Compteur ECS | | | | | | | |
| | | 1 | Disconnecteur | SOCLA | BA DN40 | | X | | | |
| SST 4 ^{ème} ETAGE + CUISINES (3 par étage) | | | | | | | | | | |
| Autres Equipements | | 2 | VMC | ALDES | INOVEC 6500 µW rv | | x | | | |
| | | 12 | CTA Cuisine | NICOTRA | DDM 7/9 E6G33014 1F | | | x | | |
| | | | | | | | | | | |
| | | | | | | | | | | |

CHAUFFERIE PRINCIPALE



| | | | | | | | | | | | | |
|-----------------------|------------------|---|----------------------|--|-----------------------------|---------|----------|-------|--|-----------------|-------|---------|
| 7 | RU COURS LEOPOLD | | | | | | | | | | GAZ | 7 |
| CHAUFFERIE PRINCIPALE | | | | | | | | | | | | |
| | | marque | | type | | Puis. | | Année | | AVIS QUALITATIF | | |
| | | | | | | | | | | Bon | Moyen | Mauvais |
| ASPECT GENERAL | | Peinture, propreté | | | | | | | | X | | |
| | | | | | | | | | | | | |
| PRODUCTION | | 1 | Chaudière 1 | HOVAL | ULTRAGAS 650 | 603 kW | 2018 | X | | | | |
| | | 1 | Chaudière 2 | HOVAL | UNO-3 | 360 kW | 2018 | X | | | | |
| | | 1 | Brûleur 2 | CUENOD | NC46 GX507 | | | X | | | | |
| | | 1 | Pompe recycl. 2 | SALMSON | SIRIUX 80-40 | | | X | | | | |
| | | | | | | | | | | | | |
| | | 1 | V3V Cascade CH2 | SAUTER | DN100 + AVM 234SF132 | | | X | | | | |
| | | 1 | Régulateur cascade | SAUTER | MODU 525 + 7 extensions | | | | | | | |
| | | 1 | Expansion | PNEUMATEX | COMPRESSO CONNECT C. 10-2,6 | 2X 500L | CG 500,6 | X | | | | |
| | | | | | | | | | | | | |
| CIRCUIT 0 | | 1 | Pompe double | LOWARA | ECOCIRC XLD 40-180F | | | X | | | | |
| RADIATEUR RESTO | | | | | | | | | | | | |
| | | 1 | V3V | SIEMENS | VXG44/40-25 + SAS 61,03 | | | X | | | | |
| CIRCUIT 1 | | 1 | Pompe double | SALMSON | SIRIUX D 65-90 | | | X | | | | |
| SST + CTA | | | | | SAUTER | | | | | | | |
| CIRCUIT 2 | | 1 | Pompe double | SALMSON | SIRIUX D32-60 | | | X | | | | |
| RADIATEUR RDC R+1 | | | | | | | | | | | | |
| | | 1 | V3V | SAUTER | AVM115SF + BUN025 | | | X | | | | |
| CIRCUIT 3 | | 1 | Pompe double | SALMSON | SIRIUX D32-60 | | | X | | | | |
| RADIATEUR R+2 | | | | | | | | | | | | |
| | | 1 | V3V | SAUTER | AVM115SF + BUN032 | | | X | | | | |
| CIRCUIT 4 | | 1 | Pompe double | SALMSON | SIRIUX D40-60 | | | X | | | | |
| BUNER VESTIAIRE | | | | | | | | | | | | |
| | | 1 | V3V | SAUTER | AVM115SF + BUN032 | | | X | | | | |
| CIRCUIT 4 | | 1 | Pompe double | SALMSON | SIRIUX D32-60 | | | X | | | | |
| R+2 JAQUAR | | | | | | | | | | | | |
| | | 1 | V3V | SAUTER | AVM115SF + BUN032 | | | X | | | | |
| | | | | | | | | | | | | |
| CIRCUIT ECS | | 1 | Echangeur | HOVAL AVEC COMPTEUR ENERGIE TRANS THERM AQUA TYPE TYPE L175 kW | | | | | | | | |
| | | 1 | Compteur énergie | SAPPEL | SHARKY DN 32 | | | | | | | |
| | | 2 | Pompe charge échang. | WILO | Stratos para Z 25/0-3 | | | | | | | |
| | | 1 | Ballon | HOVAL | 750L | | | | | | | |
| | | 1 | Pompe charge ballon | DANS PREPARATEUR | WILO Stratos para Z25/1-8 | | | | | | | |
| | | 1 | Pompe bouclage ECS | SALMSON | DSB 33-26 | | | | | | | |
| | | 1 | V3V | SIEMENS | SAS 31,03 | | | | | | | |
| | | | | | | | | | | | | |
| | | | Oui | Non | | | | | | | | |
| ARMOIRE ELECTRIQUE | | 1 | Nombre : 1 | | | | | | | | | |
| | | | | | | | | | | | | |
| TELESURVEILLANCE | | | | | | | | | | | | |
| COMPTEUR ECS | | 1 | OUI | | | | | | | | | |
| | | | | | | | | | | | | |
| DISCONNECTEUR | | 1 | OUI WATTS BABM 015 | CONTROLABLE | OUI + COMPTEUR | | | | | | | |
| | | | | | | | | | | | | |
| | | | | | | | | | | | | |
| REMARQUES | | POT DE DESEMBOUAGE SOLUTECH GTC6S AVEC POMPE SALMSON SIRIUX 32-65F ADOUCISSEUR BWT DUO3 DVGW COMPTEUR ENERGIE SUR TOUT LES CIRCUITS | | | | | | | | | | |



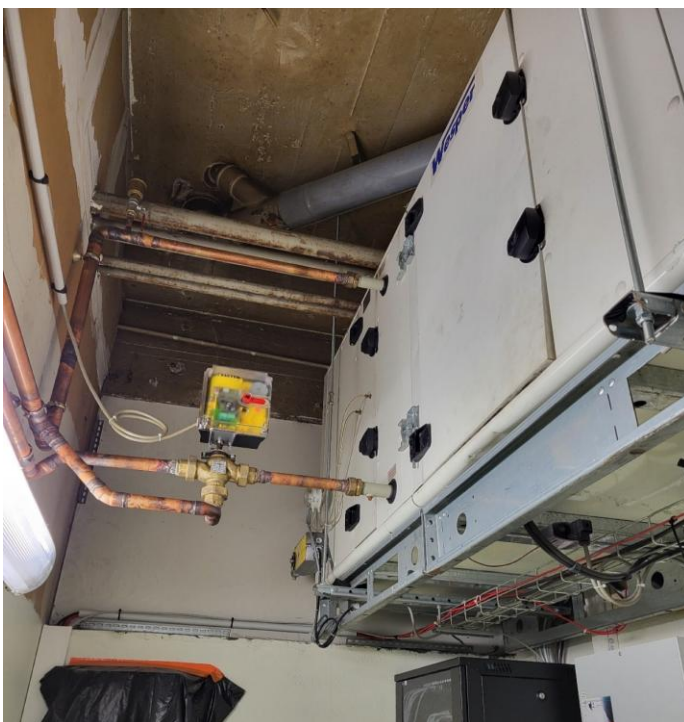
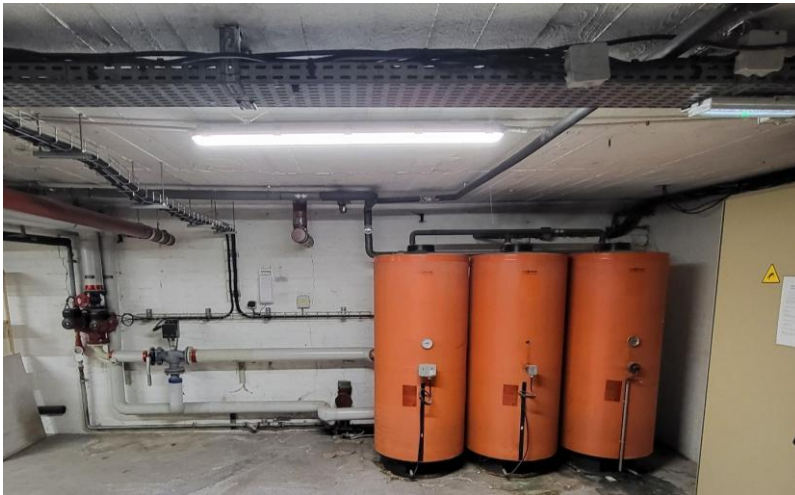


[illegible]

CHAUFFERIE PRINCIPALE



| | | | | | | | | | | |
|--|------------|--------------------|---------------------|--------------------|----------------|---------|-------|-----------------|-------|---------|
| 8 | RU MONBOIS | | | | | | | GAZ | | |
| CHAUFFERIE PRINCIPALE | | | | | | | | | | |
| | | | | marque | type | Puis. | Année | AVIS QUALITATIF | | |
| | | | | | | | | Bon | Moyen | Mauvais |
| ASPECT GENERAL | | Peinture, propreté | | | | | | X | | |
| REGULATION | | | | | | | | | | |
| PRODUCTION | | 1 | Chaudière 1 | VISSMANN | VERTOMAT VSB22 | 225KW | | | | X |
| | | 1 | Chaudière 2 | VISSMANN | PAROMAT DUPLEX | 420KW | 1190 | | | X |
| | | 1 | Brûleur 1 | CUENOD | C22 GX507 | | | | X | |
| | | 1 | Brûleur 2 | CUENOD | C54 G507/8 | | | | X | |
| | | 1 | Pompe recycl. 1 | GRUNDFOS | UPS 40-30 | | | | X | |
| | | 1 | V2V Cascade | | | | | | X | |
| | | 2 | Régulateur cascade | VISSMANN DEKAMATIK | | | | | | X |
| | | 2 | Expansion | | | 300L | 1999 | | X | |
| CIRCUIT 1 | | 1 | Pompe double | GRUNDFOS | UPCD 65-60 | | | | X | |
| SST + EXTENTION | | 1 | REGULATEUR | SAUTER | FLEXOTRON 100 | | | | X | |
| CIRCUIT 2 | | 1 | Pompe double | GRUNDFOS | UPSD 40-60 | SAUTER | | | X | |
| Ex PIZZERIA | | | | | | | | | | |
| CIRCUIT 3 | | 1 | Pompe double | SALMSON | DCX50-90 | | | | X | |
| Chaufferie SOUFFLAGE CTA | | | | | | | | | | |
| CIRCUIT 4 | | 1 | Pompe double | GRUNDFOS | UPD 42-42F | | | | X | |
| CHAUFFAGE | | 1 | V3V | SAUTER | AR30W13 | | | | X | |
| CIRCUIT 5 | | 1 | Pompe double | GRUNDFOS | UPSD 50-60 | | | | X | |
| CONSTANT | | | | | | | | | | |
| CIRCUIT 6 | | 1 | Pompe double | GRUNDFOS | UPSD 40-60F | | | | X | |
| CONSTANT | | 1 | V2V | SIEMENS | | | | | X | |
| | | 1 | Régulateur | SIEMENS | RVL 41,10 | | | | X | |
| CIRCUIT ECS | | 1 | Echangeur | | | | | | | |
| | | 1 | Ballons | VISSMANN | VERTICELL-NT | 3001122 | 350L | | X | |
| | | 1 | Pompe charge ballon | GRUNDFOS | UPSD 65-60 | | | | X | |
| | | 1 | Pompe bouclage ECS | GRUNDFOS | UP30-15 | | | | X | |
| | | 1 | Vase d'expansion | | | | 200L | | | |
| | | 1 | V3V | LANDIS ET GYR | SKD32 | | | | X | |
| <div style="display: flex; justify-content: space-between;"> Oui Non </div> | | | | | | | | | | |
| ARMOIRE ELECTRIQUE | | 1 | Nombre : | | | | | | | |
| TELESURVEILLANCE | | 1 | | | | | | | | |
| COMPTEUR EAU ADOUCIE | | 1 | | | | | | | | |
| DISCONNECTEUR | | 1 | OUI | CONTROLABLE | NON | | | | | |
| REMARQUES | | | | | | | | | | |
| <div style="display: flex; justify-content: space-between;"> +1 ADOUCISSEUR PENTAIR Q1354-A9 2016 </div> | | | | | | | | | | |



SST 2

| | |
|--|---------|
| | Mauvais |
|--|---------|

X

| | |
|--|--|
| | |
|--|--|

SST 3

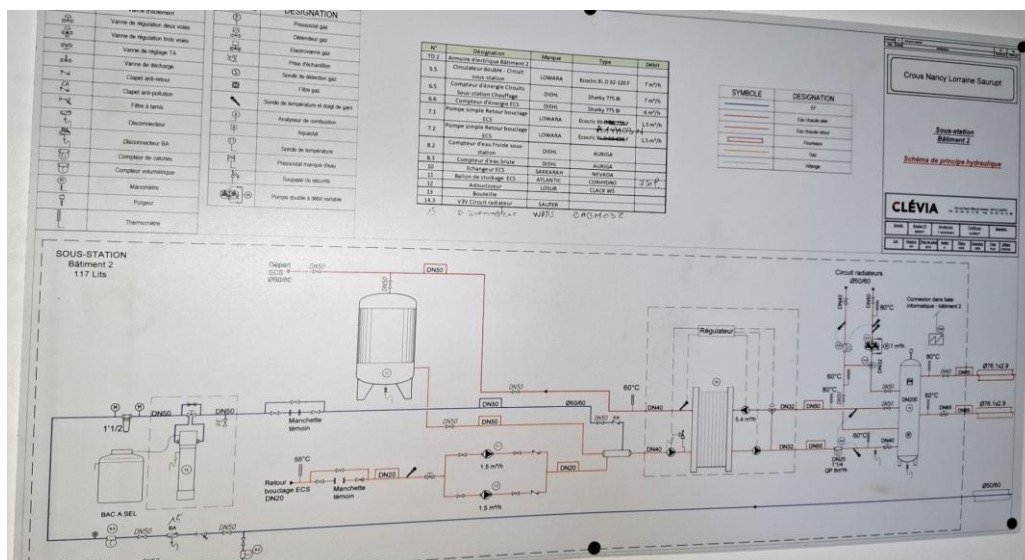
| | |
|--|--|
| | |
| | |

CHAUFFERIE PRINCIPALE

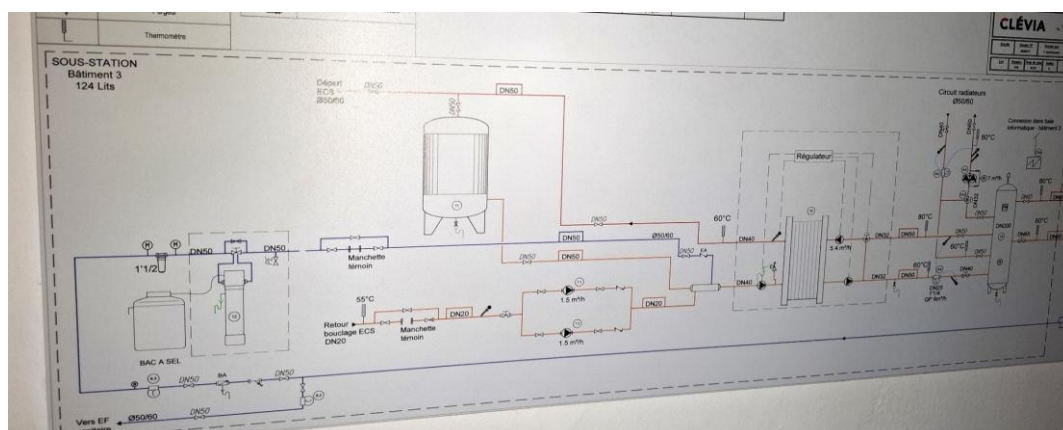


| | | | | | | | | | |
|--|------------|---------------------------|--------------------------------------|---------------------------|-----------------|-----------------|-------|---------|---|
| 9 | CU SAURUPT | | | | | | GAZ | | |
| CHAUFFERIE PRINCIPALE | | | | | | | | | |
| | | marque | type | Puis. | Année | AVIS QUALITATIF | | | |
| | | | | | | Bon | Moyen | Mauvais | |
| ASPECT GENERAL | | Peinture, propreté | | | | | x | | |
| PRODUCTION | | | | | | | | | |
| | 1 | Chaudière 1 | BOSCH | IC01-05 | 725KW | 2021 | x | | |
| | 1 | Chaudière 2 | BOSCH | IC01-05 | 725KW | 2021 | x | | |
| | 2 | V2V Cascade | SAUTER | DEF 100 F200 + ASM124F120 | | | | | |
| | 1 | Brûleur 1 | CUENOD | NC95GX907 | | 2021 | x | | |
| | 1 | Brûleur 2 | CUENOD | NC95GX907 | | 2021 | x | | |
| | 1 | filtre à boue | GLW DN 40 | | | | | | |
| | 1 | Pompe filtre à boue | LOWARA ECOCIRC | M25-6-180 | | | | | |
| | 1 | Régulateur | DISTECH | ECLYPSE | modules + écran | | X | | |
| | 1 | Expansion | PNEUMATEX | COMPRESSO CG 1500,6 | | | | | X |
| 1 | Centrale | PNEUMATEX | PLENO PI 9.1 Connect | | | | | X | |
| CIRCUIT 1 | | | | | | | | | |
| RESTO U | 1 | Pompe double | LOWARA | ECOCIRC XLD 50-150 F | | | | X | |
| | | | | | | | | | |
| | | | | | | | | | |
| CIRCUIT 2 | | | | | | | | | |
| ADMINISTRATION | 1 | Pompe double | LOWARA | ECOCIRC XLD 32-80 | SAUTER | | | | X |
| | 1 | V3V | SAUTER | BUN050F300 + AVM321SF132 | | | | X | |
| | 1 | Régulateur | SAUTER | EQJW125 | | | | X | |
| CIRCUIT 3 | | | | | | | | | |
| BAT 1 | 1 | Pompe double | LOWARA | ECOCIRC XLD 32-120F | | | | X | |
| | 1 | V3V | SAUTER | BUN050F300 + AVM321SF132 | | | | X | |
| | 1 | Régulateur | SAUTER | EQJW125 | | | | X | |
| CIRCUIT 4 | | | | | | | | | |
| PRIMAIRE Bat 2-3-4 | 1 | Pompe double | LOWARA | LNTEH65-125 | | | | X | |
| | | | | | | | | | |
| | | | | | | | | | |
| DIVERS | | | | | | | | | |
| | 1 | centrale gaz | OLDHAM | MX32 + 3 capteurs | | | | | |
| | 1 | POMPE DE RELEVAGE | GRUNDFOS | KP250 | | | | | |
| | | | | | | | | | |
| CIRCUIT ECS | | | | | | | | | |
| | 1 | Echangeur | SAKKARAH | NEVADA 2513 DS | | | | x | |
| | 1 | Ballon | ATLANTIC | CORHYDRO | 750l | | | | x |
| | 1 | Pompe charge ballon | GRUNDFOS | UPS 32-80/Vit2 | | | | x | |
| | 2 | Pompe recyclage Echangeur | WILO | PARA 25-130 | | | | x | |
| | 2 | Pompe bouclage réseau | LOWARA | A1VM 03 et 05N | | | | x | |
| | 1 | V3V | SIEMENS | VXG48,25 + SSC619 | | | | x | |
| Oui Non | | | | | | | | | |
| ARMOIRE ELECTRIQUE | | Nombre : | | | | | | | |
| ADOUCCISSEUR | | 1 | CLACK WS1 Bi | 150 L résines | +BAC A SEL | 2022 | | | |
| COMPTEUR ECS | | 1 | +1 filtre à cartouche | cintropur DN 25 | | | | | |
| DISCONNECTEUR | | OUI ECS | SOCLA BA2850 DN32 | COMPTEUR OUI | | | | | |
| DISCONNECTEUR | | CHAUFFAGE | SOCLA BA2860 DN15 + Compteur'appoint | | | | | | |
| REMARQUES | | | | | | | | | |
| 484 RADIATEURS SUR ENSEMBLE DU SITE 968 BOUCHES DE VMC SUR ENSEMBLE DU SITE | | | | | | | | | |

SST BATIMENT 2



SST BATIMENT 3



SOUS-STATION BATIMENT 3

| | | | | |
|----------------|--------------------|--|--|--|
| ASPECT GENERAL | Peinture, propreté | | | |
|----------------|--------------------|--|--|--|

[illegible]

| | | Oui | Non | | | |
|--------------------|---|-----|----------|--|--|--|
| ARMOIRE ELECTRIQUE | 1 | | Nombre : | | | |

| | | |
|--------------|---|--|
| COMPTEUR ECS | 1 | |
|--------------|---|--|

| |
|--|
| |
|--|



| | |
|--|-------------------------|
| | SOUS-STATION BATIMENT 4 |
|--|-------------------------|

| | | | | |
|----------------|--------------------|--|--|--|
| ASPECT GENERAL | Peinture, propreté | | | |
|----------------|--------------------|--|--|--|

| CIRCUIT | Quantité | Description | Marque | Modèle | Unité | Remarque |
|-----------|----------|---------------|--------|--------------------------|-------|----------|
| CHAUFFAGE | 1 | Pompe double | LOWARA | ECOCIRC XLD 32-120F | x | |
| | | | | | | |
| | 1 | V3V motorisée | SAUTER | BUN050F300 + AVM321SF132 | x | |
| | | | | | | |
| | | | | | | |
| | | | | | | |
| | | | | | | |
| | | | | | | |
| | | | | | x | |
| | | | | | | |
| | | | | | | |
| | | | | | | |
| | | | | | | |
| | | | | | | |
| | | | | | | |
| | | | | | | |
| | | | | | | |
| | | | | | | |
| | | | | | | |
| | | | | | | |

| | | Oui | Non | | | |
|--------------------|---|-----|----------|--|--|--|
| ARMOIRE ELECTRIQUE | 1 | | Nombre : | | | |

| | | |
|--------------|---|--|
| COMPTEUR ECS | 1 | |
|--------------|---|--|

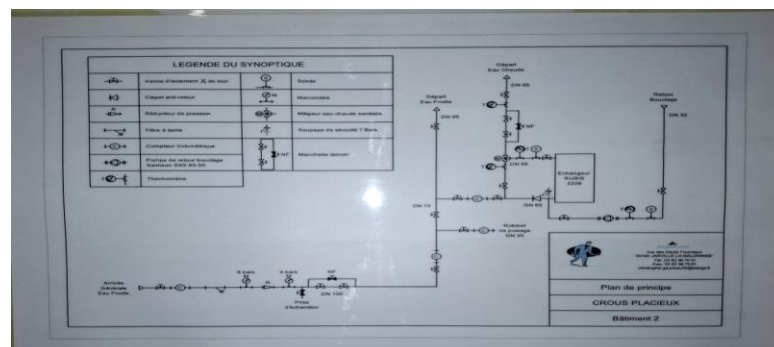
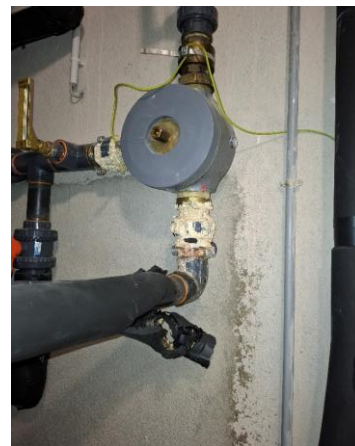
| |
|--|
| |
|--|

SOUS STATION PRINCIPALE



| | | | | | | | |
|---------------------------|--|----------------------|---|---------------------|-------|-----------------|-------|
| 10 | CU PLACIEUX | | | | RCU | | |
| SOUS STATION PRINCIPALE | | | | | | | |
| | | marque | type | Puis. | Année | AVIS QUALITATIF | |
| | | | | | | Bon | Moyen |
| | | | | | | Mauvais | |
| ASPECT GENERAL | | Peinture, propreté | | | | | |
| COMPTEUR ENERGIE | 1 | Propriété RCU | | | | X | |
| PRODUCTION | 1 | MODULE RCU | | | | | |
| | 1 | Régulateur | SAUTER NOVAFLEX 203 ET 207 + EYR202 | | | | |
| | 1 | Expansion | Groupe Maintien de Pression GRUNDFOS MPGNS - 5/26 | | X | | |
| CIRCUIT 1 | 1 | Pompe double | GRUNDFOS | MAGNA D65-60F | X | | |
| SUD | 1 | V3V | SAUTER | AVM32 125F + BUN040 | X | | |
| | 1 | Régulateur | | | | | |
| CIRCUIT 2 | 1 | Pompe double | GRUNDFOS | MAGNA D65-60F | X | | |
| NORD LOGEMENT | 1 | V3V | SAUTER | AVM32 125F + BUN050 | X | | |
| | 1 | Régulateur | | | | | |
| CIRCUIT 3 | 1 | Pompe double | GRUNDFOS | MAGNA D50-120F | X | | |
| VERS SOUS STATION | | | | | | | |
| | | | SAUTER | | | | |
| VENTILATION | 2 | VMC | ALDES | INEGO 4000 | | | |
| | 2 | VMC | ALDES | MINIVEC 160 | | | |
| | 2 | VMC | ALDES | CVEC 1000 | | | |
| | 1 | VMC | ALDES | CVEC 1500 | | | |
| | 1 | VMC | CAIROX | SIM-EC- REGULD 121 | | | |
| | 1 | VMC | CAIROX | EDGE REGULO 70V | | | |
| CIRCUIT ECS | 1 | Echangeur | ATLANTIC | RU 2226D | | | |
| 1 COMPTEUR ENERGIE SAPPÉL | 2 | Pompe charge échang. | SALMSON | SXM50-90N | | | |
| | 1 | Ballon PRIMAIRE | 2000L | | | | |
| | 2 | Pompe charge ballon | GRUNDFOS UPSD 40-60F | | | | |
| | 1 | Pompe bouclage ECS | SALMSON | SXS65-60 | | | |
| | 1 | Régulation échangeur | ATLANTIC | RUBIS MAGNUM T4-11 | | | |
| | 1 | V3V | SIEMENS | SQX32 + VXF 31.50 | | | |
| | | Oui | Non | | | | |
| ARMOIRE ELECTRIQUE | OUI | Nombre : | | | | | |
| TELESURVEILLANCE | | | | | | | |
| COMPTEUR ECS | OUI | | | | | | |
| DISCONNECTEUR | OUI | COMPTEUR | | | | | |
| | | | | | | | |
| REMARQUES | MAINTIEN DE PRESSION GRUNDFOS AVEC 2 POMPES DE 2011 MPGN5-5/26 MITIGEUR EN CHAUFFERIE INACTIF 412 RADIATEURS SUR ENSEMBLE DU SITE 824 BOUCHES DE VMC SUR ENSEMBLE DU SITE | | | | | | |

SOUS STATION BAT 2



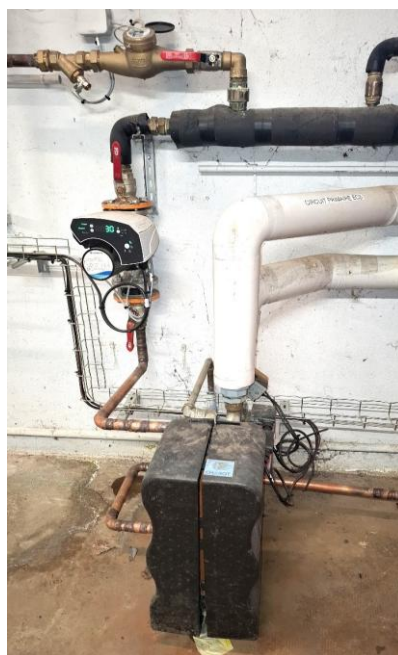
| | | | | | | | |
|---------------------------------|-------------|--|----------|--------------------------------|-------|-----------------|-------|
| 10 | CU PLACIEUX | | | | RCU | | |
| SST BATIMENT 2 | | | | | | | |
| | | marque | type | Puis. | Année | AVIS QUALITATIF | |
| | | | | | | Bon | Moyen |
| | | | | | | Mauvais | |
| ASPECT GENERAL | | Peinture, propreté | | | | X | |
| | | COMPTEUR ENERGIE SUR LES CIRCUITS ET ECS | | | | | |
| REGULATION | 1 | Régulateur | SAUTER | NOVA FLEX 207 | x | | |
| CIRCUIT 1 NORD | 1 | Pompe double | GUNDFOS | MAGNA 3 D32-120F | x | | |
| | 1 | V3V | SAUTER | AVM 234 SF 132 + BUE 065 F 200 | x | | |
| | 1 | Pompe double | GUNDFOS | MAGNA 3 D 40-100F220 | x | | |
| CIRCUIT 2 SUD | 1 | V3V | SAUTER | AVM 125 SF 132 + BUN050 F300 | x | | |
| | | | | | | | |
| | | | | | | | |
| | | | | | | | |
| | | | | | | | |
| | | | | | | | |
| DIVERS | 1 | VASE EXPANSION | ZIMET | 300L | X | | |
| | 1 | MITIGEUR ECS | | | | X | |
| | | | | | | | |
| VENTILLATION | 2 | VMC | ALDES | INEGO 4000 | | | |
| | 2 | VMC | ALDES | INEGO 8000 | | | |
| | 1 | VMC | ALDES | MINIVEC 180 | | | |
| | | | | | | | |
| | | | | | | | |
| | | | | | | | |
| | | | | | | | |
| CIRCUIT ECS COMPTEUR ENERGIE | 1 | Echangeur | MAGNUM | RU 2226D | x | | |
| | 2 | Pompe charge échang. | SALMSON | SXM50-90 | x | | |
| | 1 | Ballon | ATLANTIC | 2000 L | x | | |
| | 1 | Pompe charge ballon double | GRUNDFOS | UPSD 40-60F | x | | |
| | 1 | Pompe bouclage ECS | SALMSON | SXS65 - 60 | x | | |
| | 1 | Régulation échangeur | ATLANTIC | RUBIS MAGNUM T4-11 | x | | |
| | 1 | V3V | SIEMENS | SQX32 + VXF 31.50 | x | | |
| | | Oui | Non | | | | |
| ARMOIRE ELECTRIQUE | 1 | Nombre : | | | | | |
| TELESURVEILLANCE | 0 | | | | | | |
| COMPTEUR ECS | 1 | | | | | | |
| DISCONNECTEUR | 0 | 1 COMPTEUR | ECS | | | | |
| | | | | | | | |
| REMARQUES | | | | | | | |

LOCAL TECHNIQUE



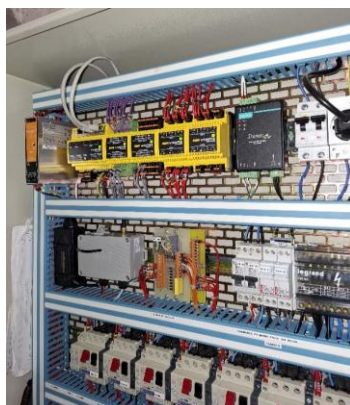
| | | | | | | | | | | | | |
|--------------------|------------|----------------------|---------------------|------------------------------------|----------------------------|--------|------|------------|-------|-----------------|-------|---------|
| 11 | RU BRABOIS | | | | | | | RCU GAZ | | | | |
| LOCAL TECHNIQUE | | | | | | | | | | | | |
| | | | | | | marque | type | Puis. | Année | AVIS QUALITATIF | | |
| | | | | | | | | | | Bon | Moyen | Mauvais |
| ASPECT GENERAL | | Peinture, propreté | | | | | | | | X | | |
| PRODUCTION | | | | | | | | | | | | |
| | | RCU sur site déporté | | | | | | | | | | |
| | | | | | | | | | | | | |
| | | | | | | | | | | | | |
| | | | | | | | | | | | | |
| | | | | | | | | | | | | |
| | | | | | | | | | | | | |
| | | | | | | | | | | | | |
| | | | | | | | | | | | | |
| | | | | | | | | | | | | |
| | | | | | | | | | | | | |
| CIRCUIT 1 | | | | | | | | | | | | |
| OUEST | | 1 | Pompe double | GRUNDFOS | UPS D65-120F | | | | | | | |
| | | 1 | V3V | SAUTER | AVR30W2 + B4F32 | | | | | | | |
| | | 1 | Régulateur | SAUTER | EQJW120 SAUTER | | | | | | | |
| S/ST° CTA | | 1 | CTA | CIAT | CTA AIRTECH 60B | | | | | | | |
| | | 1 | V3V Motorisée | SAUTER | BUN050F200 + AVM321 SF 132 | | | | | | | |
| | | 1 | Pompe | GRUNDFOS | UPS 32-55 G180 | | | | | | | |
| CTA RECUP | | | | | | | | | | | | |
| | | 1 | CTA Récupération | CIAT | AIRTECH 60A | | | | | | | |
| | | 1 | Pompe | GRUNDFOS | UPS 40-30f | | | | | | | |
| | | 1 | Vase d'Expension | CODITHERM | 50L | | | | | | | |
| | | 1 | Ventilateur | SOLYVENT + VENTEC GB92N1 | | | | | | | | |
| | | 1 | Automate | SAUTER ECOS500 + 4 MODULES ECOLINK | | | | | | | | |
| | | 3 | Batteries de réccup | CIAT | | | | | | | | |
| | | 3 | V3V motorisée | SAUTER | BUN 025 + AVM 105 SF 132 | | | | | | | |
| CTA DOUBLE FLUX | | 1 | CALADAIR | HEXAMOTION 80D PREMIUM CO ECO | | | | | | | | |
| | | 1 | V3V Motorisée | BELIMO R3025-10 + LR24-A-SR | | | | | | | | |
| | | | | | | | | | | | | |
| DIVERS | | | | | | | | | | | | |
| | | 1 | ADOU CISSEUR | BWT | P7075-A4X | 2005 | | | | | | |
| | | | | | | | | | | | | |
| | | | | | | | | | | | | |
| CIRCUIT ECS | | | | | | | | | | | | |
| | | 2 | Préparateur ECS GAZ | AO SMITH | ADM90 | 300L | 2016 | | | | | |
| | | 1 | Pompe | GRUNDFOS | UP 20-45N | | | | | | | |
| | | 2 | Pompe bouclage ECS | GRUNDFOS | ALPHA-2 25-60-130 | | | | | | | |
| | | 1 | Pompe bouclage ECS | LOWARA | ECOCIRC M20-6 /150N | | | | | | | |
| | | | | | | | | | | | | |
| | | | | | | | | | | | | |
| Oui Non | | | | | | | | | | | | |
| ARMOIRE ELECTRIQUE | | 1 | Nombre : | | | | | | | | | |
| TELESURVEILLANCE | | 0 | | | | | | | | | | |
| COMPTEUR ECS | | 1 | | | | | | | | | | |
| DISCONNECTEUR | | 0 | COMPTEUR | | | | | | | | | |
| REMARQUES | | | | | | | | | | | | |

SOUS STATION PRINCIPALE



| | | | | | | | | | |
|-------------------------|---------------|--------------------|--------------------------|--------------------------------------|------------------------------------|-------|-----------------|---------|--|
| 12 | RU MEDREVILLE | | | | | RCU | | | |
| SOUS STATION PRINCIPALE | | | | | | | | | |
| | | | marque | type | Puis. | Année | AVIS QUALITATIF | | |
| | | | | | | | Bon | Moyen | |
| | | | | | | | | Mauvais | |
| ASPECT GENERAL | | Peinture, propreté | | | | | X | | |
| REGULATION | | | | | | | | | |
| PRODUCTION | | 1 | REGULATION | SAUTER | MODU 680as + 6 modules d'extension | | X | | |
| | | 1 | Expansion | ZILMET | 300L | | | X | |
| | | 1 | Expansion | PNEUMATEX | 500L | | 1996 | X | |
| CIRCUIT 1 | | 1 | Pompe double | WILO | STRATOS MAXO D50/0,5-9 | | X | | |
| RU | | 1 | V3V | BELIMO | H540B + LV24A-SZ -TPC | | X | | |
| CIRCUIT 2 | | 1 | Pompe double | WILO | STRATOS MAXO D50/0,5-9 | | X | | |
| CROUS | | 1 | V3V | BELIMO | H540B + LV24A-SZ -TPC | | X | | |
| CIRCUIT 3 | | 1 | Pompe double | WILO | STRATOS MAXO D40/0,5-8 | | X | | |
| EXTENSION | | 1 | V3V | BELIMO | H525 + LV24A-SZ -TPC | | X | | |
| CIRCUIT 4 | | 1 | Pompe double | WILO | STARTOS MAXO D40/0,5-12 | | X | | |
| CONSTANT | | | | | | | | | |
| VENTILATION | | 1 | CTA | DE COMPENSATION EN CHAUFFERIE | | | | X | |
| | | 1 | CTA | TUPE 355 AIR 11000M3/H AVEC REPRISE | | | 1972 | X | |
| | | 1 | VMC | SANITAIRE EN TOITURE | | | | | |
| | | 1 | REGULATION | SAUTER | FLEXTRON RDT 100 | | | | |
| CIRCUIT ECS | | 1 | Echangeur double | CHAROT | 706425 | | | X | |
| | | 1 | Pompe charge échang. | GRUNDFOS | UPSD 32,80 | | | X | |
| | | 1 | Ballon | CHAROT | 500L | | | X | |
| | | 1 | Pompe charge ballon | CHAROT LOWARA | XLN 40-120F | | | X | |
| | | 2 | Pompe bouclage ECS | GRUNDFOS | UP20-45N + SALMSON NSB25-20B | | | X | |
| | | 1 | V3V | SAUTER | DN32 | | | X | |
| | | | | | | | | | |
| | | | Oui | Non | | | | | |
| ARMOIRE ELECTRIQUE | | 1 | Nombre : | | | | | | |
| ADOUCCISSEUR | | 1 | 1 PERMO | TYPE 1354 + 1 FILTRE CINTROPUR DN 32 | | | X | | |
| COMPTEUR ECS | | 1 | OUI | | | | | | |
| DISCONNECTEUR | | 1 | OUI + Compteur d'appoint | CONTROLABLE | | | | | |
| REMARQUES | | | | | | | | | |

SOUS STATION PRINCIPALE



| | | | | | | | | | |
|-------------------------|----------------------|---|------------------------|---------------|--------------------------------|-------|-----------------|-------|---------|
| 13 | RU STANISLAS MEURTHE | | | | | RCU | | | |
| SOUS STATION PRINCIPALE | | | | | | | | | |
| | | | marque | type | Puis. | Année | AVIS QUALITATIF | | |
| | | | | | | | Bon | Moyen | Mauvais |
| ASPECT GENERAL | | Peinture, propreté | | | | | X | | |
| REGULATION | | | | | siemens simco | | | | |
| PRODUCTION | | | | | | | | | |
| | | 1 | ECHANGEUR RCU PRIMAIRE | | | | | | |
| | | 1 | Automate régulation | SAUTER | MODU 612LC + 3 MODULES | | | | |
| | | 1 | Automate régulation | SAUTER | MODU 680 AS + 4 MODULES | | | | |
| | | 1 | ECRAN AUTOMATE | SAUTER | | | | | |
| | | 2 | Expansion | | 105 + 150L | | | | |
| CIRCUIT | | 1 | Pompe double | GRUNDFOS | MAGNA 1D 32-60 180 | | | | |
| RADIATEUR | | 1 | V3V | SIEMENS | SAS61 + VXG 40 -20 | | | | |
| | | | | | SAUTER | | | | |
| CIRCUIT | | 1 | Pompe double | GRUNDFOS | UPSD 32-50F | | | | |
| SALLE PERSONNEL | | 1 | V3V | BELIMO | LVC 24A-SZ-PTC+ H 520 BD32 | | | | |
| | | 1 | Régulation | | | | | | |
| CIRCUIT | | 1 | Pompe double | GRUNDFOS | UPSD 32-80F | | | | |
| ETUDIANT | | 1 | V3V | BELIMO | LVC 24 A - SZ PTC + H525 BD 40 | | | | |
| | | | | SIEMENS | RMH 600B | | | | |
| CIRCUIT | | 1 | Pompe double | GRUNDFOS | MAGNA 1D 32-80 180 | | | | |
| CTA | | | | | | | | | |
| CIRCUIT | | 1 | Pompe double | WILO | YONOS MAXO D 32/0,5-7 | | | | |
| Local Annexe | | 1 | V3V | BELIMO | LVC 24A-SZ-PTC+ H 520 BD32 | | | | |
| CIRCUIT | | 1 | Pompe double | GRUNDFOS | UPSD 40-60 F | | | | |
| CONSTANT | | | | | | | | | |
| CIRCUIT ECS | | 1 | Echangeur | RUBIS | RU 114 D REC | | | | |
| | | 1 | Régulation Echangeur | RUBIS | T4 10 MILLENIUM | | | | |
| | | 2 | Pompe charge échang. | SALMSON | PRIUX MASTER 32-90 | | | | |
| | | 1 | Ballon | 500L | | | | | |
| | | 1 | Pompe charge ballon | GRUNDFOS | UPSD 32-60F | | | | |
| | | 1 | V3V motorisée | SIEMENS | VXP459/32 - 16 + SAS 31 | | | | |
| | | 1 | Pompe sanitaire | WILO | STAR Z25 /6 | | | | |
| | | <div>Oui</div> <div>Non</div> | | | | | | | |
| ARMOIRE ELECTRIQUE | | 1 | Nombre : | | | | | | |
| TELESURVEILLANCE | | | | | | | | | |
| COMPTEUR ECS | | 1 | OUI | | | | | | |
| DISCONNECTEUR | | 1 | OUI | WATTS BABM020 | | | | | |
| REMARQUES | | 1 ADOUCISSEUR 2008 BWT 08177 Double 2 CTA GEA CAIR Plus 6000 M3/H D-04808 ET DEUX V3V SIEMENS SQS65 2008 2 V3V SIEMENS SQS65 + (VXG 44,20 + VXG 44,25) 2008 2 Régulateur SIEMENS Synco RMU 720B 2008 | | | | | | | |

ARRIVEE RESEAU BATIMENT A



| | | | | | | | | | |
|---------------------------|-------------|--|--------------------------|------------------------------|---------------------------------|------------------|-----------------|-------|---------|
| 14 | CU CHARMOIS | | | | | RCU | | | |
| ARRIVEE RESEAU BATIMENT A | | | | | | | | | |
| | | | marque | type | Puis. | Année | AVIS QUALITATIF | | |
| | | | | | | | Bon | Moyen | Mauvais |
| ASPECT GENERAL | | Peinture, propreté | | | | | | | |
| | | | | | | | | | |
| CIRCUIT 1 | | 2 | Pompe sur socle | SALMSON | G912515 LS90L + NRG122-21C | 1979 | | X | |
| GENERAL | | | | | | | | | |
| | | | | | | | | | |
| | | | | | | | | | |
| CIRCUIT 2 | | 1 | Pompe double | GRUNDFOS | UPSD 32-50 180 | | X | | |
| ADMINISTRATION | | | | | | | | | |
| | | 1 | V3V | AR30 W235 + MH32R15 | | | X | | |
| | | | | | | | | | |
| CIRCUIT 3 | | 1 | Pompe double | GRUNDFOS | MAGNA 1D 40-180 F | | X | | |
| ARRIERE | | | | | | | | | |
| | | 1 | SERVOMOTEUR V3V | AR30 W235 + MH32R40 | | | X | | |
| | | | | | | | | | |
| CIRCUIT 4 | | 1 | Pompe double | GRUNDFOS | MAGNA 1D 40-120F | | X | | |
| AVANT | | | | | | | | | |
| | | 1 | V3V | SAUTER | AR30 W235 + MH32R41 | | X | | |
| | | | | | | | | | |
| DIVERS | | 1 | REGULATION | SAUTER | MODU 680as + 4 modules et écran | | X | | |
| | | 1 | VASE EXPANSION | SALMSON | V-204-CE | | X | | |
| | | 1 | ADOUCCISSEUR | BWT | | | | | |
| | | 1 | POT A BOUE | avec pompe SALMSON SXM 32-50 | | | | | |
| CIRCUIT ECS | | 1 | Echangeur | CHAROT | 706415 | | X | | |
| | | | | | | | | | |
| | | 2 | Pompe charge échang. | GRUNDFOS | MAGNA 1D 40-80 | | X | | |
| | | 2 | Ballon | CHAROT | T2932 | 1000L | X | | |
| | | 1 | Pompe charge double ball | GRUNDFOS | UPSD 40-50F | | X | | |
| | | 2 | Pompe bouclage ECS | GRUNDFOS | TP32-90 | | X | | |
| | | 1 | Régulation | CHAROT | PACK CONTROL | | X | | |
| | | 1 | V3V | SAUTER | B6R40 + AVF234SF 132-5 | | X | | |
| | | Oui | | Non | | | | | |
| ARMOIRE ELECTRIQUE | | 1 | | | Nombre : | 1 | | | |
| TELESURVEILLANCE | | | | | | | | | |
| COMPTEUR ECS | | 1 | OUI | | | | | | |
| DISCONNECTEUR | | 1 | OUI | WATTS DN20 | 1 | COMPTEUR APPOINT | | | |
| | | | | 1 | PRESSOSTAT | Manque d'eau | | | |
| REMARQUES | | 427 RADIATEURS SUR ENSEMBLE DU SITE 854 BOUCHES DE VMC SUR ENSEMBLE DU SITE | | | | | | | |

| | | |
|----|-------------|-----|
| 14 | CU CHARMOIS | RCU |
|----|-------------|-----|

ARRIVEE RESEAU BATIMENT B

| marque | type | Puis. | Année | AVIS QUALITATIF | | |
|--------|------|-------|-------|-----------------|-------|---------|
| | | | | Bon | Moyen | Mauvais |

| | | | | | | |
|-----------------------|--|--------------------|--------------|----------|----------------------|--|
| ASPECT GENERAL | | Peinture, propreté | | | | |
| CIRCUIT 1 | | 1 | Pompe double | GRUNDFOS | MAGNA 1 D32-60 | |
| PARKING AVANT | | 1 | V3V | SAUTER | AVM115F + BUN032F300 | |
| | | 1 | REGULATEUR | SAUTER | EQJW245 | |
| CIRCUIT 2 | | 1 | Pompe double | GRUNDFOS | MAGNA 1 D 32-60 | |
| FACADE ARRIERE | | 1 | V3V | SAUTER | AVM115F + BUN032F300 | |
| | | | | | | |
| | | | | | | |
| | | | | | | |
| DIVERS | | 1 | ADOUCCISSEUR | | | |
| | | | | | | |
| | | | | | | |
| | | | | | | |
| | | | | | | |
| | | | | | | |
| | | | | | | |

| | | | | | | | |
|--------------------|--|---|------------------------|----------------|---------------------------------|--|--|
| CIRCUIT ECS | | 1 | Mitigeur | JRG UMAT 1"1/4 | | | |
| | | 1 | Echangeur double | CHAROT | MODULE PX DELTA 15 type 17415 | | |
| | | 1 | Pompe charge échang. | WILO | STRATOS D32/1-12 | | |
| | | 1 | Ballon | CHAROT | 1000L | | |
| | | 1 | Pompe transfert ballon | GRUNDFOS | MAGNA 1D 32-80F (pas sanitaire) | | |
| | | 1 | Pompe bouclage ECS | SALMSON | NSB 25-20B | | |
| | | 1 | Régulation | CHAROT | Pack control 3 | | |
| | | 1 | V3V | SAUTER | | | |

Oui Non

| | | | | | | |
|---------------------------|---|-----|------------|--|--|--|
| ARMOIRE ELECTRIQUE | 1 | OUI | Nombre : 1 | | | |
|---------------------------|---|-----|------------|--|--|--|

| | | | | | | |
|-------------------------|-----|--|--|--|--|--|
| TELESURVEILLANCE | NON | | | | | |
|-------------------------|-----|--|--|--|--|--|

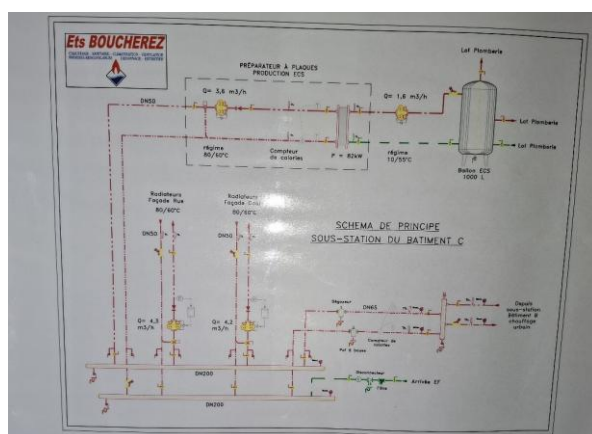
| | | | | | | |
|---------------------|---|-----|--|--|--|--|
| COMPTEUR ECS | 1 | OUI | | | | |
|---------------------|---|-----|--|--|--|--|

| | | | | | | |
|----------------------|---|------------------|------|------------|--|--|
| DISCONNECTEUR | 1 | OUI Honeywell BA | DN15 | COMPTEUR 1 | | |
|----------------------|---|------------------|------|------------|--|--|

| | | | | | | |
|------------------|--|--|--|--|--|--|
| REMARQUES | | | | | | |
|------------------|--|--|--|--|--|--|

- 1 COMPTEUR ENERGIE ECS : SHARKY DN20
- 1 COMPTEUR ENERGIE GENERAL : SHARKY DN50

ARRIVEE RESEAU BATIMENT C



ARRIVEE RESEAU BATIMENT C

| | |
|--|----------------|
| | Mauvais |
|--|----------------|

EQ IW245

Non

| | |
|--|--|
| | |
|--|--|

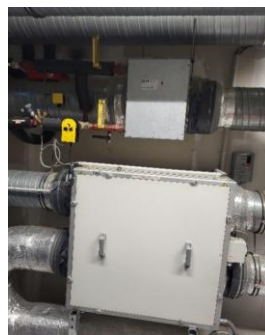
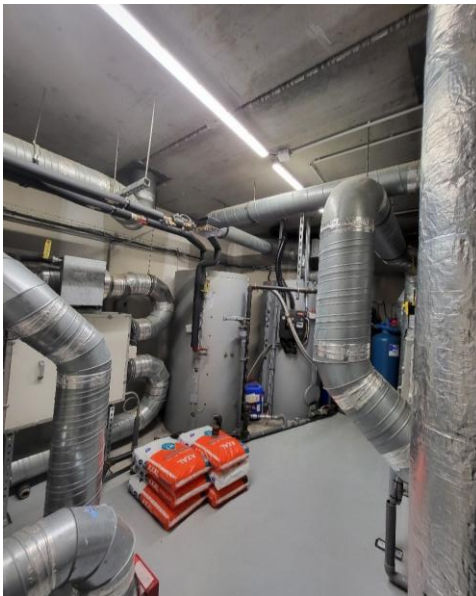
NON

1

QUI

COMPTEUR ENERGIE GENERAL : SHARKY DN50

ARRIVEE RESEAU



| | | | | | | | |
|--|-----------|---------------------|------------------|----------------------------|--------|---------|-----------------|
| 15 | FOYER AGI | | | | | RCU | |
| ARRIVEE RESEAU | | | | | | | |
| | | | marque | type | Puis. | Année | AVIS QUALITATIF |
| | | | | | | Bon | Moyen |
| | | | | | | Mauvais | |
| ASPECT GENERAL | | Peinture, propreté | | | | | |
| | | | | | | | |
| | | | | | | | |
| CIRCUIT 1 | 1 | Pompe double | WILO | TOP SD32/7 | | X | |
| CONSTANT | | | | | | | |
| CIRCUIT 2 | 1 | Pompe double | WILO | TOP SD32/7 | | X | |
| RADIATEUR | 1 | V3V | SAUTER | AVM115 SF 132 | | X | |
| CIRCUIT 3 | 1 | Pompe double | WILO | STRATOS D32/1-12 | | X | |
| PLANCHER | 1 | V3V | SAUTER | AVM115 SF 132 | | X | |
| DIVERS | 1 | VASE EXPANSION | GITRAL | MB 105 L | | x | |
| | 1 | AUTOMATE | SAUTER | NOVAFLEX 207 + écran | | x | |
| VENTILATION | | 1 | CTA HEBERGEMENT | TAC | | X | |
| | | 1 | CTA RESTAURATION | TAC | | X | |
| | 2 | V3V | SAUTER | BUN020F300 + AVM 115 SF132 | | X | |
| | 1 | VMC | VIM | JBEB 05L | | x | |
| | 2 | VMC | VIM | KMDT 05 IS | | x | |
| cuisine | 1 | CTA | VIM | KSDA24B | | x | |
| | 2 | REGULATION | | RTD 100 | | x | |
| LOCAL ECS | 6 | PANNEAUX SOLAIRE | | | | | HS |
| | 1 | BALLON SOLAIRE | TISUN | 1000 L | | X | |
| | 1 | V3V | SAUTER | AVM115 SF132 | SAUTER | X | |
| | 1 | BALLON ECS | TISUN | 1000 L | | X | |
| | 1 | V3V ECS | SAUTER | AVM115SF132 + DN 15 | | X | |
| | 1 | MODUL SOLAIRE | TISUN avec pompe | GRUNDFOS SOLAR 15-60 | | X | |
| | 1 | VASE SOLAIRE | REFLEX | 50L | | X | |
| | 1 | POMPE BOUCLAGE | GRUNDFOS | UP25-55N | | X | |
| | 1 | POMPE TRANSFERT ECS | SALMSON | NSB 30-25B | | X | |
| | 1 | ADOUCCISSEUR | CILLIT | | | | X |
| | 1 | CENTRALE CHLORATION | CILLIT | REFLEX 421 | | | X |
| | 1 | REGULATION | SAUTER | ECOS EYR202 | | X | |
| ARMOIRE ELECTRIQUE | | 2 | Nombre : | | | | |
| TELESURVEILLANCE | | | | | | | |
| COMPTEUR ECS | | 1 | | | | | |
| DISCONNECTEUR | | 1 | SOCLA BA 2860 | + Compteur appoint | | | |
| REMARQUES | | | | | | | |
| 25 RADIATEURS SUR ENSEMBLE DU SITE | | | | | | | |
| 50 BOUCHES DE VMC SUR ENSEMBLE DU SITE | | | | | | | |

SST BATIMENT C ARRIVEE RESEAU URBAIN



| | | | | | | | |
|--------------------------------------|---|---------------------|--------------|----------------------------|-------|-----------------|-------|
| 16 | CU HAUTE-MALGRANGE | | | | RCU | | |
| SST BATIMENT C ARRIVEE RESEAU URBAIN | | | | | | | |
| | | marque | type | Puis. | Année | AVIS QUALITATIF | |
| | | | | | | Bon | Moyen |
| | | | | | | Mauvais | |
| ASPECT GENERAL | | Peinture, propreté | | | | | |
| REGULATION | 1 | AUTOMATE | SAUTER | FLEXOTRON 800 | X | | |
| CIRCUIT | 1 | POMPE RECYCLAGE | LOWARA | ECOCIRC PLUS XLD80-120F | | X | |
| SECONDAIRE ECHANGEUR | 2 | EXPANSION | ZILMET | 2 x 200L | X | | |
| CIRCUIT 1 | 1 | POMPE | LOWARA | ECOCIRC PLUS XL D50-120F | X | | |
| BAT B | 1 | COMPTEUR ENERGIE | SHARKY DN65 | | X | | |
| CIRCUIT 2 | 1 | POMPE | LOWARA | ECOCIRC XL PLUS D32-80F | X | | |
| BAT A | 1 | V3V | SAUTER | AVM 321 SF + BUN040F300 | X | | |
| | 1 | COMPTEUR ENERGIE | SHARKY DN40 | | | | |
| CIRCUIT 3 | 1 | POMPE | LOWARA | ECOCIRC XL PLUS D40-80F | X | | |
| OUEST | 1 | V3V | SAUTER | AVM 321 SF132 + BUN050F300 | X | | |
| | 1 | COMPTEUR ENERGIE | SHARKY DN40 | | | | |
| CIRCUIT 4 | 1 | POMPE | LOWARA | | X | | |
| ECS | 1 | COMPTEUR ENERGIE | SHARKY DN32 | | | | |
| CIRCUIT 5 | 1 | POMPE | LOWARA | ECOCIRC XLD 40-80 | X | | |
| EST | 1 | V3V | SAUTER | AVM 321 SF132 + BUN050F300 | X | | |
| | 1 | COMPTEUR ENERGIE | SHARKY DN40 | | | | |
| CIRCUIT ECS | 1 | Echangeur | MAGNUM | RU 2180 S | X | | |
| | 1 | Ballon SECONDAIRE | 1000L | | | X | |
| | 2 | Pompe charge ballon | GRUNDFOS | MAGNA 32-60 180 | X | | |
| | 2 | Pompe bouclage ECS | LOWARA | ECOCIRC XL N 25-60 | X | | |
| | 1 | Régulation | MAGNUM | RUBIS T4-10 MILLENIUM | X | | |
| | 1 | V3V | ESBE | | X | | |
| | | Oui | Non | | | | |
| ARMOIRE ELECTRIQUE | 1 | Nombre : 1 | | | | | |
| TELESURVEILLANCE | NON | | | | | | |
| COMPTEUR ECS | 1 | OUI | | | | | |
| DISCONNECTEUR | 1 | NON CONTROLABLE | COMPTEUR OUI | | | | |
| REMARQUES | 222 RADITEURS SUR ENSEMBLE DU SITE 444 BOUCHES DE VMC SUR ENSEMBLE DU SITE | | | | | | |

SST BATIMENT B



ARRIVEE RESEAU SEEV



| | | | | | | | |
|---------------------|---------------|--|---|----------------------------------|--|-----------------|-------|
| 17 | CU MEDREVILLE | | | | | | RCU |
| ARRIVEE RESEAU SEEV | | | | | | | |
| | | marque | type | Puis. | Année | AVIS QUALITATIF | |
| | | | | | | Bon | Moyen |
| | | | | | | Mauvais | |
| ASPECT GENERAL | | Peinture, propreté | | | | X | |
| EXPENSION | | | | | | X | |
| REGULATION | | 1 | AUTOMATE | SAUTER | MODULO 522 + 3 MODULES+ ECRAN TACTILE | X | |
| CIRCUIT 1 | | 1 | POMPE DOUBLE | GRUNDFOS | MAGNA 1 D80-60 | 2015 | X |
| NORD | | | | | | | |
| | | 1 | V3V | SAUTER | AVM 322F + BQE 065 F300 | | X |
| | | 1 | | | | | |
| CIRCUIT 2 | | 1 | POMPE DOUBLE | GRUNDFOS | MAGNA 1 D80-60 | 2015 | X |
| SUD | | | | | | | |
| | | 1 | V3V | SAUTER | AVM 322F + BQE 080 F300 | | X |
| | | 1 | | | | | |
| CIRCUIT 3 | | 1 | POMPE DOUBLE | GRUNDFOS | MAGNA 1 D40-120 | 2015 | X |
| LOGEMENT FONCTION | | | | | | | |
| | | 1 | V3V | SAUTER | AVM 115 SF + BUN040F300 | | X |
| | | 1 | | | | | |
| AUTRES | | 1 | COMPTEUR | ENERGIE CONSTANT ECS SHARKY DN65 | | X | |
| | | 1 | POMPE D'INJECTION | PRODUIT FILMOGENE POUR ECS | | X | |
| | | 1 | ADOUCCISSEUR | PENTAIR | | X | |
| | | 1 | ADOUCCISSEUR | REMPLISSAGE CHAUFFAGE | | | x |
| | | 1 | Pompe double | GRUNDFOS | MAGNA 1D 65-80 | SAUTER | X |
| | | 1 | Module remplissage maintien de pression | ATLANTIC | MAG'S AR70 SV203 | | x |
| | | 1 | Filtre a boues magnétiques | ATLANTIC | MAG'NET EVO 16 PC | | x |
| | | 1 | POMPE | WILO | STRATOS 50/1-8 | | x |
| VENTILATION | | 3 | VMC | ALDES | VEC 382 | | |
| | | | | | | | |
| | | | | | | | |
| Climatisation | | 1 | Climatisation serveur (R410A) | DAIKIN | RKS50G2V1B | 2010 | |
| | | 1 | Climatisation bureau (R410A) | DAIKIN | RXS50J2V1B | 2011 | |
| | | 1 | Climatisation bureau (R410A) | DAIKIN | RXS50J2V1B | 2011 | |
| | | 3 | Cassette plafonnière | DAIKIN | | | |
| | | 1 | Unité exterieur bureau RDC (R32) | LG | UUB1 U20 | | |
| | | 2 | Split | LG | ASN12GB1U0 | | |
| | | 1 | Climatisation bureau Direction (R410A) | LG | A5UW406FA5 | | |
| | | 1 | Split | LG | | | |
| | | 1 | Climatisation bureau MDE | SANYO | SAP C75Q5 | | |
| | | 1 | Unité intérieur | SANYO | | | |
| CIRCUIT ECS | | 1 | Echangeur | MAGNUM | RU2228 | | X |
| | | 2 | Pompe charge échang. | SALMSON | SIRIUX 50-80 + WILO YONOS MAXO 50/0,5-12 | | X |
| | | 1 | Ballon PRIMAIRE | ATLANTIC GUILLOT | 2500 L | | X |
| | | 2 | Pompe bouclage ECS | GRUNDFOS | TP32-230/2 | | X |
| | | 1 | Régulation | NAVISTEM | W2000 | | X |
| | | 1 | V3V | SIEMENS | VXF 32/50-40 + SAX 319 | | X |
| | | Oui | Non | | | | |
| ARMOIRE ELECTRIQUE | | 1 | Nombre : | | | X | |
| TELESURVEILLANCE | | | | | | | |
| COMPTEUR ECS | | 1 | | | | X | |
| DISCONNECTEUR | | 1 | OUI SOCLA BA2860 DN 20 | COMPTEUR OUI | | | X |
| REMARQUES | | 490 RADIATEURS SUR ENSEMBLE DU SITE 880 BOUCHES DE VMC SUR ENSEMBLE DU SITE | | | | | |

ARRIVEE RESEAU SEEV



AVIS QUALITATIF

| | |
|--|---------|
| | Mauvais |
|--|---------|

[illegible]

Nombre :

1 COMPTEUR

518 RADIATEURS SUR ENSEMBLE DU SITE
1036 BOUCHES DE VMC SUR ENSEMBLE DU SITE

BATIMENT A



BATIMENT B



BATIMENT C



BATIMENT D



BATIMENT E



| 18 | | CU MONPLAISIR | | | | | RCU | | |
|--------------------|--|---|--------------------------|----------------|-----------------------|-------|-------|-----------------|-------|
| | | BATIMENT E | | | | | | | |
| | | marque | | type | | Puis. | Année | AVIS QUALITATIF | |
| | | | | | | | | Bon | Moyen |
| | | | | | | | | Mauvais | |
| ASPECT GENERAL | | Peinture, propreté | | | | | X | | |
| REGULATION | | 2 | REGULATION | SAUTER | RDT600 | | | | |
| CIRCUIT 1 | | 1 | DOUBLE POMPE | LOWARA | ECOCIRC XLD 32-120 F | X | | | |
| NORD 1+2 | | 1 | V3V | NENUTEC | DN32 + NABM 1,2-05 | X | | | |
| CIRCUIT 2 | | 1 | DOUBLE POMPE | LOWARA | ECOCIRC XLD 32-120 F | X | | | |
| SUD 1+2 | | 1 | V3V | NENUTEC | DN40 + NABM 1.2-05 | X | | | |
| CIRCUIT 3 | | 1 | POMPE DOUBLE | LOWARA | ECOCIRC XLD 32-120 F | X | | | |
| NORD 3+4 | | 1 | V3V | NENUTEC | DN25 + NABM 1,2-05 | X | | | |
| CIRCUIT 4 | | 1 | Pompe DOUBLE | LOWARA | ECOCIRC XLD 32-120 F | X | | | |
| SUD 3+4 | | 1 | V3V | NENUTEC | DN32+NABM 1,2-05 | X | | | |
| PRIMAIRE | | 1 | Echangeur à plaques | ALFA LAVAL | T5-MFG | X | | | |
| | | 1 | Soupapes | DN25 | 5bar | X | | | |
| | | 1 | filtre EF | CINTROPUR | DN 32 | X | | | |
| | | 1 | Adoucisseur | WS 125ci | 75 litres + bac à sel | X | | | |
| | | 1 | Compteur Energie Général | DIEHL | SHARKY DN 50 | | | | |
| | | 1 | Compteur Energie ECS | DIEHL | SHARKY DN 32 | | | | |
| | | 1 | VASE EXPANSION | REFLEX | 140L | X | | | |
| | | | | | | | | | |
| | | | | | | | | | |
| | | | | | | | | | |
| VENTILATION | | 3 | VMC | France AIR | | | | | |
| | | 2 | VMC | France AIR | SIRIUX ECM 4000 VPC | | | | |
| | | 1 | VMC | France AIR | SIRIUX ECM 2000 VPC | | | | |
| | | | | | | | | | |
| CIRCUIT ECS | | 1 | BALLON ECS | ATLANTIC | CORYHDRO 750L | X | | | |
| | | 1 | CHARGE BALLON | GRUNDFOS | UPS 25-55 | X | | | |
| | | 1 | V3V | SIEMENS | VXP 159.32 + SAS61 | X | | | |
| | | 1 | Pompe charge echangeur | GRUNDFOS | UPML 32,105 | X | | | |
| | | 2 | Pompes bouclage | LOWARA | Ecocirc M 25-6 /180 N | X | | | |
| | | 1 | Echangeurs à plaques | ATLANTIC | RUS 214 SS | X | | | |
| | | 1 | Régulateur | ATLANTIC | NAVISTEM W3000 | X | | | |
| | | <div style="display: flex; justify-content: space-between;"> Oui Non </div> | | | | | | | |
| ARMOIRE ELECTRIQUE | | 1 | Nombre : | | | | | | |
| TELESURVEILLANCE | | | | | | | | | |
| COMPTEUR ECS | | 1 | OUI | | | | | | |
| DISCONNECTEUR | | 1 | OUI CALEFFI DN20 | 1 COMPTEUR OUI | | | | | |
| REMARQUES | | | | | | | | | |

SST BATIMENT B 2000 RCU



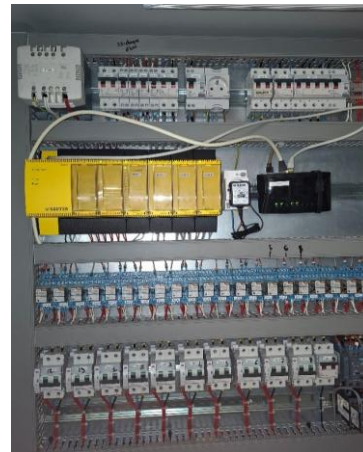
SST BATIMENT B 1000



SST BATIMENT B 3000



RU ARTEM



| | | |
|----|----------------|-----|
| 20 | RU ARTEM + MDE | RCU |
|----|----------------|-----|

RU ARTHEM

| marque | type | Puis. | Année | AVIS QUALITATIF | | |
|--------|------|-------|-------|-----------------|-------|---------|
| | | | | Bon | Moyen | Mauvais |

| | | | | | | |
|-----------------------|---|---------------------|--------|--------------------------|---|--|
| ASPECT GENERAL | | Peinture, propreté | | | | |
| EXPANSION | 1 | Vase d'expension | REFLEX | 140L | | |
| REGUATION | 1 | AUTOMATE | SAUTER | MODU 525 + 4 modules | X | |
| CIRCUIT 1 | 1 | Pompe double | LOWARA | ECOCIRC XL D 32-100 | X | |
| RADIATEURS | 1 | V3V | SAUTER | AVM 115F132 + BUN032F300 | X | |
| CIRCUIT 2 | 1 | Pompe double | LOWARA | ECOCIRC XL D 40-150F | X | |
| CONSTANT - CTA | | | | | | |
| CIRCUIT 3 | 1 | Pompe double | LOWARA | ECOCIRC XL D 32-80 | X | |
| PANNEAUX RAYONNANT | 1 | V3V | SAUTER | AVM 105F + BUN015 F 300 | X | |
| CIRCUIT 4 | 2 | Pompe double | LOWARA | ECOCIRC XL D 32-100 | X | |
| SOL | 1 | V3V | SAUTER | AVM 105F132 + BUN015F300 | X | |
| CIRCUIT 5 | 1 | Pompe double | LOWARA | ECOCIRC XLD 32-80 | X | |
| SECONDAIRE SOL | 1 | Echangeur à plaques | | 18L | X | |
| | 1 | Vase d'Expansion | REFLEX | 140L | X | |

| | | | | | | |
|--------------------|---|----------|--|---------------|--|--|
| VENTILATION | 1 | VMC | LINDAB | LINCO 1600 EC | | |
| | 5 | CTA | DENCO | HAPPEL | | |
| | 1 | CTA | Salle VIP, perchoir faux plafond inaccessible | | | |
| | 1 | VMC | de conduit en sous station avec thermostat ambiant | | | |
| | 1 | AUTOMATE | SAUTER MODU 525 + 4 MODULES | | | |

| | | | | | | |
|--------------------|---|----------------------|------------------|------------------------|--|--|
| CIRCUIT ECS | 1 | Echangeur | ATLANTIC GUILLOT | RUS 214DD | | |
| | 2 | Pompe charge échang. | WILO | STRATOS PARA 30-1-8 | | |
| | 1 | Ballon | ATLANTIC GUILOT | CORHYDRO 1000L | | |
| | 2 | Pompe charge ballon | WILO | STRATOS PARA 30-1-8 | | |
| | 1 | Pompe bouclage ECS | GRUNDFOS | MAGNA 125-40/180 | | |
| | 1 | Régulation | ATLANTIC | NAVISTEM W3000 | | |
| | | V3V | SIEMENS | VXP 459 32-16 + SAS 61 | | |

| | | | | | |
|---------------------------|---|----------|--|--|--|
| ARMOIRE ELECTRIQUE | 2 | Nombre : | | | |
|---------------------------|---|----------|--|--|--|

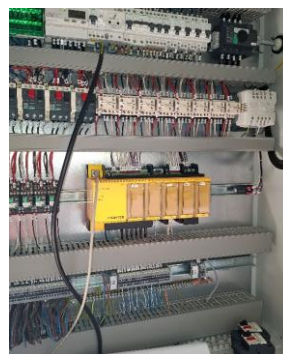
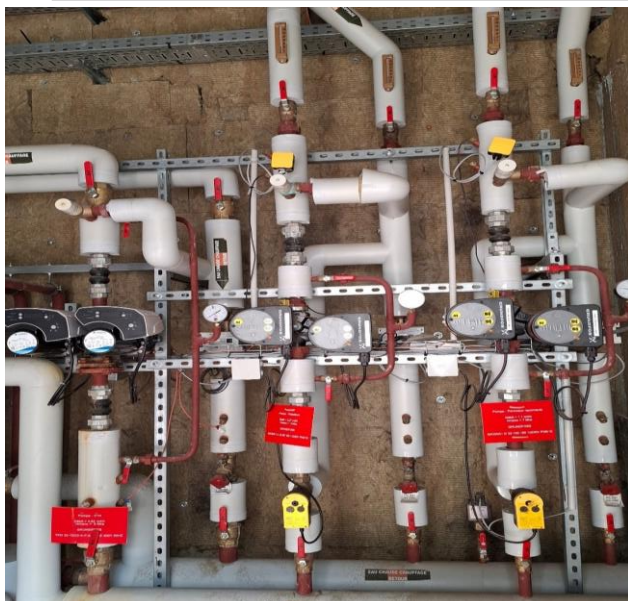
| | |
|-------------------------|--|
| TELESURVEILLANCE | |
|-------------------------|--|

| | | | |
|---------------------|---|-------------|--|
| COMPTEUR ECS | 1 | ENERGIE ECS | |
|---------------------|---|-------------|--|

| | | | |
|----------------------|---|------------|--------------------|
| DISCONNECTEUR | 1 | SOCLA DN20 | COMPTEUR APPOINT 1 |
|----------------------|---|------------|--------------------|

| | |
|------------------|----------------------------|
| REMARQUES | 1 ADOUCISSEUR DE 2017 250L |
| | 1 POMPE VIDE CAVE |

MDE



| | | | | | | | | | | |
|--------------------|---|-----------------------------|--|--------------------------|-------------|-------|--------------------|-----------------|-------|---------|
| 20 | | RU ARTEM + MDE | | | | | | RCU | | |
| MDE | | | | | | | | | | |
| | | | | marque | type | Puis. | Année | AVIS QUALITATIF | | |
| | | | | | | | | Bon | Moyen | Mauvais |
| ASPECT GENERAL | | Peinture, propreté | | | | | | | | |
| | | | | | | | | | | |
| | | | | | | | | | | |
| CIRCUIT 1 | 1 | Pompe double | GRUNDFOS | MAGNA1D 32-80 | | | X | | | |
| RADIATEURS | 1 | V3V | SAUTER | AVM 115F132 + BUN032F300 | | | X | | | |
| | | | | | | | | | | |
| CIRCUIT 2 | 1 | Pompe double | LOWARA | ECOCIRC XL D 32-120F | | | X | | | |
| CONSTANT - CTA | | | | | | | | | | |
| | | | | | | | | | | |
| CIRCUIT 3 | 1 | Pompe double | GRUNDFOS | MAGNA1D 32-100 | | | X | | | |
| PANNEAUX RAYONNANT | 1 | V3V | SAUTER | AVM 105F + BUN015 F 300 | | | X | | | |
| | | | | | | | | | | |
| CIRCUIT PRIMAIRE | 1 | Pompe double | LOWARA | ECOCIRC XLD 32-120 | | | X | | | |
| | | | | | | | | | | |
| | | | | | | | | | | |
| VENTILATION | 1 | CTA | CARRIER | 39HQ 09,06 Type ER50C | 9500m3 | 2015 | X | | | |
| | | | avec 1 regulateur vitesse, 2 servomoteur SAUTER | | | | | | | |
| | 1 | POMPE DOUBLE EC | LOWARA | ECOCIRC XL D 32-120 | | | X | | | |
| | 1 | VMC | VIM | SD10 NU ECOWATT | | | X | | | |
| | 1 | VMC | LINDAB | LINCO 1600 EC | | | X | | | |
| | | | | | | | | | | |
| FROID | 1 | GROUPE FROID | CARRIER | 30RBSY080B | R410A/7,3KG | 2015 | X | | | |
| | 1 | BALLON TAMPON | | | 300L | | X | | | |
| | 1 | VMC | de conduit en sous station avec thermostat ambiant | | | | X | | | |
| | 1 | CLIMATISATION | AIRWELL | AWAU-YLD024 | R410A/2,2KG | | X | | | |
| | | | | | | | | | | |
| AUTRES | 1 | AUTOMATE SOUS STATION | SAUTER MODU 525 + 4 MODULES | | | | X | | | |
| | 1 | AUTOMATE LOCAL CTA | SAUTER MODU 525 + 3 MODULES | | | | X | | | |
| | | | | | | | | | | |
| | 2 | VASE EXPANSION SOUS STATION | CIMM | 50L | | | | X | | |
| | 1 | ADOUCISSEUR | | | | | | X | | |
| | | | | | | | | | | |
| | | | | | | | | | | |
| | | | | | | | | | | |
| ARMOIRE ELECTRIQUE | | 2 | Nombre : | | | | | | | |
| | | | | | | | | | | |
| TELESURVEILLANCE | | | | | | | | | | |
| | | | | | | | | | | |
| COMPTEUR ECS | | 1 | ENERGIE ECS | | | | | | | |
| | | | | | | | | | | |
| DISCONNECTEUR | | 1 | SOCLA DN20 | | | | COMPTEUR APPOINT 1 | | | |
| | | | | | | | | | | |
| | | | | | | | | | | |
| REMARQUES | | | | | | | | | | |
| | | | | | | | | | | |
| | | | | | | | | | | |

ARRIVEE SST



| | | | | | | | |
|--------------------|--|---------------------|--------------------|-----------------|-------------------|-----------------|-------|
| 21 | RU SAURUPT | | | | SST de CU SAURUPT | | |
| ARRIVEE SST | | | | | | | |
| | | marque | type | Puis. | Année | AVIS QUALITATIF | |
| | | | | | | Bon | Moyen |
| | | | | | | Mauvais | |
| ASPECT GENERAL | | Peinture, propreté | | | | | |
| | | | | | | | |
| | | | | | | | |
| CIRCUIT 1 | 1 | Pompe double | GRUNDFOS | UPSD 32-50 | | | X |
| MEDECINE | 1 | V3V | SAUTER | AVM115F120 | | | X |
| | 1 | REGULATEUR | SAUTER | EQJW 125 | | | X |
| | 1 | Pompe double | GRUNDFOS | UPSD 65-120 | | | X |
| CIRCUIT 1 | 1 | Pompe double | GRUNDFOS | UPSD 65-120 | | | X |
| CONSTANT CTA | | | | | | | X |
| | | | | | | | X |
| | | | | | | | X |
| CIRCUIT 3 | 1 | Pompe double | GRUNDFOS | UPSD 40-120F | | | X |
| RESTAURANT | | | | | | | X |
| | 1 | V3V | SAUTER | AR30W23F001 | | | X |
| | 1 | REGULATEUR | SAUTER | EQJW 125 | | | X |
| | | | | | | | |
| VENTILATION | 2 | CAISSON SOUFLAGE | DE COMPENSATION | | | | x |
| | 1 | CTA | SYSTEMAIR | | | | x |
| | 1 | CTA | Salle de spectacle | | | | x |
| | | | | | | | |
| | | | | | | | |
| | | | | | | | |
| | | | | | | | |
| CIRCUIT ECS | | | | | | | |
| | 2 | Ballon | VISSMANN | VERTICELL 1000L | | | X |
| | 2 | Pompe charge ballon | GRUNDFOS | UPSD 40-60/F | | | X |
| | | | | | | | |
| | | | | | | | |
| | | Oui | Non | | | | |
| ARMOIRE ELECTRIQUE | 1 | Nombre : | | | | | |
| TELESURVEILLANCE | | | | | | | |
| COMPTEUR ECS | | 1 | | | | | |
| DISCONNECTEUR | | 1 | | | | | |
| | | | | | | | |
| REMARQUES | <p>1 ADOUCISSEUR (remplissage)</p> <p>2 COMPTEUR ENERGIE HS MAIS PREVOIR UN COMPTAGE ARRIVEE SST</p> | | | | | | |

SST ARRIVE RESEAU



| | | | | | | | | | |
|---------------------|---|--------------------|----------|----------------------------|------|-------|-------|-----------------|---------|
| 22 | RU VANDOEUVRE | | | | | RCU | | | |
| SST ARRIVEE RESEAU | | | | | | | | | |
| | | | | marque | type | Puis. | Année | AVIS QUALITATIF | |
| | | | | | | | Bon | Moyen | Mauvais |
| ASPECT GENERAL | | Peinture, propreté | | | | | x | | |
| | | | | | | | | | |
| CIRCUIT 1 | 1 | Pompe double | WILO | YONOS PICO D30/1-8 | | | x | | |
| REGULE | | | | | | | | | |
| | 1 | V3V | SIEMENS | SQK34 + VB 31.25 | | | x | | |
| | 1 | REGULATEUR | EQJW 120 | | | | x | | |
| CIRCUIT 2 | 1 | Pompe double | GRUNDFOS | UPSD 40-60F | | | x | | |
| CONSTANT | | | | | | | | | |
| | | | | | | | | | |
| CIRCUIT 3 | 1 | Pompe double | GRUNDFOS | UPSD 40-30F | | | x | | |
| NOUVEAU CCT | | | | | | | | | |
| | | V3V | SIEMENS | SQK34 + VB 31,25 | | | x | | |
| | 1 | Regulateur | SAUTER | EQJW 120 | | | | | |
| CIRCUIT 4 | 1 | Pompe double | SALMSON | EC 2650 - T3 - N2 | | | x | | |
| ANCIEN CCT | 1 | V3V MOTORISEE | SIEMENS | VB31,32+SQK34 | | | | | |
| | 1 | Regulateur | SAUTER | EQJW 120 | | | | | |
| CIRCUIT 5 | 1 | Pompe double | GRUNDFOS | UPSD 65-120F | | | x | | |
| ECS | 1 | V3V | SAUTER | MH32F50 + AR30W13 SAUTER | | | | | |
| | 1 | Regulateur | SAUTER | EQJW 120 | | | | | |
| CIRCUIT 6 | 1 | Pompe double | GRUNDFOS | UTS D40-120 | | | x | | |
| VENTILLO CONVECTEUR | 1 | V3V | SIEMENS | VB 31,32 +SQK34 | | | x | | |
| | 1 | Régulateur | SAUTER | EQJW 120 | | | x | | |
| | | | | | | | | | |
| CIRCUIT 7 | 1 | POMPE DOUBLE | LOWARA | ECOCIRC XL D65-120F | | x | | | |
| CTA | | | | | | | | | |
| | | | | | | | | | |
| CIRCUIT ECS | 1 | MODULE | VIESMANN | DC50/1,1 HORCIELL 4 X 500L | | | x | | |
| | 1 | Pompe bouclage | WILO | IPL 32/135-1,1/2 | | | x | | |
| | | | | | | | | | |
| | | Oui | Non | | | | | | |
| ARMOIRE ELECTRIQUE | | Nombre : | | | | | | | |
| TELESURVEILLANCE | | | | | | | | | |
| COMPTEUR ECS | | | | | | | | | |
| DISCONNECTEUR | | | | | | | | | |
| | | | | | | | | | |
| REMARQUES | 16 VENTILLO CONVECTEURS (10 SALLE + 6 étoiles brasserie) 1 ADOUCISSEUR DE 2012 CILLIT REFLEX A1420 5 CTA + 1 ventilation café TUNZINI VH 10-16 + 1 v3v motorisée SAUTER + 1 KG160 trane + 2 x KG63 TRANE + 1 Ciat DFP 5000 en toiture 1 VMC + 2 fourilles SAFAIR 5 régulateurs CTA SAUTER RDT 100 | | | | | | | | |





ARRIVEE RESEAU

| marque | type | Puis. | Année | AVIS QUALITATIF | | |
|--------|------|-------|-------|-----------------|-------|---------|
| | | | | Bon | Moyen | Mauvais |

| | | | | | | | |
|--|--------------------|--------------------------|----------|----------------------------|------|---|---|
| ASPECT GENERAL | Peinture, propreté | | | | | | |
| | | | | | | | |
| REGUATION (AUTOMATE) | | SAUTER NOVA FLEX | | | | | |
| CIRCUIT 1 CTA | 1 | Pompe double | GRUNDFOS | UPS D40-60F | X | | |
| | 2 | V3V | SAUTER | BXN015F200 + AVM 115 SF132 | X | | |
| | | | | | | | |
| CIRCUIT 2 RADIATEUR | 1 | Pompe double | GRUNDFOS | UPSD 32-50F | X | | |
| | 1 | V3V | SAUTER | AVM 115SF131 FBXN 20 F200 | X | | |
| | | | | | | | |
| AUTRES | 1 | VASE EXPANSION | VAREM | 1000L | 2007 | X | |
| | 1 | ADOUCCISSEUR | | 40L | 2007 | | X |
| | | | | | | | |
| VENTILATION SAM CUISINE | 1 | CAISSON SOUFLAGE cuisine | CIAT | TOP75A2L 12000 | 2007 | | |
| | 1 | CAISSON SOUFLAGE sam | CIAT | TOP 75 AIL 100 | 2007 | | |
| | 1 | EXTRACTEUR | CIAT | VIRTUO 09 | | | |
| | 1 | CAISSON EXTRACTION | CIAT | TOP 25 CI 290 | 2007 | | |
| | 1 | CAISSON EXTRACTION | CIAT | MAGMA 250BP | 2007 | | |
| | 1 | VMC | ALDES | CVEC 750R | | | |
| | | | | | | | |

| | | | | | | | | |
|--------------------|---|----------------------|----------|-----------------------------------|------|--|--|--|
| CIRCUIT ECS | 1 | Echangeur | MAGNUM | RUS 210DD | 37L | | | |
| | 1 | Pompe charge échang. | | | | | | |
| | 1 | Ballon MIXTE ELEC | | | | | | |
| | 2 | Pompe charge ballon | GRUNDFOS | MAGNA 1 32-60 + SALMSON SXM 32-50 | | | | |
| | 1 | Pompe bouclage ECS | GRUNDFOS | UP 20-07 N150 | | | | |
| | 1 | Régulation | SAUTER | EY3600 | ELOS | | | |
| | 1 | V3V | SIEMENS | SQS359 | | | | |

Oui
Non

| | | | | |
|-----------------------------|----------|--|--|--|
| ARMOIRE ELECTRIQUE 1 | Nombre : | | | |
|-----------------------------|----------|--|--|--|

| | |
|-------------------------|--|
| TELESURVEILLANCE | |
|-------------------------|--|

| | |
|-----------------------|--|
| COMPTEUR ECS 0 | |
|-----------------------|--|

| | | | |
|------------------------|-----|-------|-------------|
| DISCONNECTEUR 1 | OUI | SOCLA | BA2760 DN20 |
|------------------------|-----|-------|-------------|

| | |
|--------------|--|
| AUTRE | |
|--------------|--|